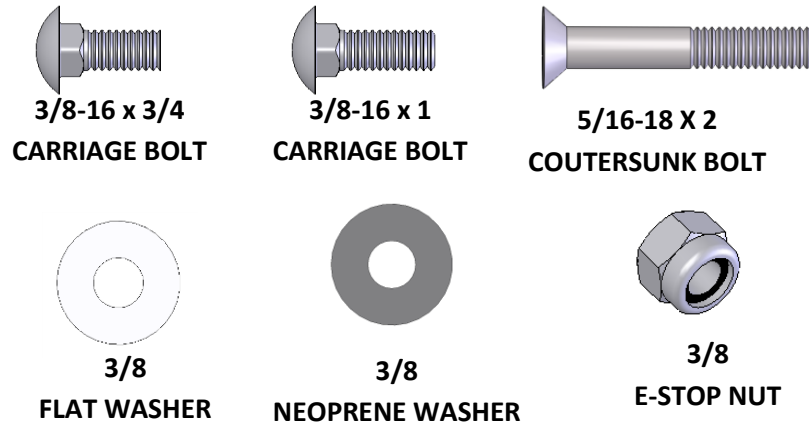


## Recommended Tools



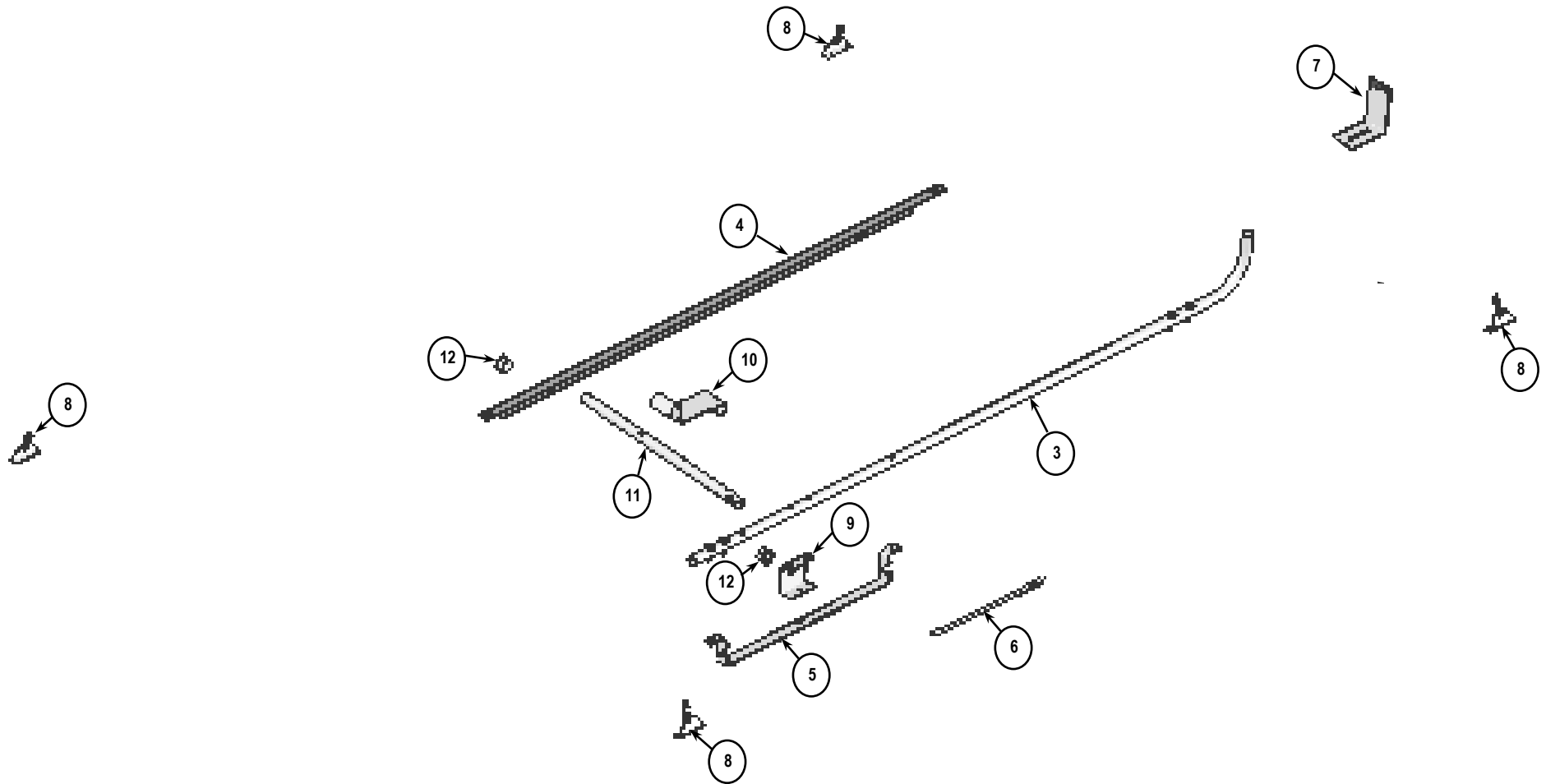
## Hardware



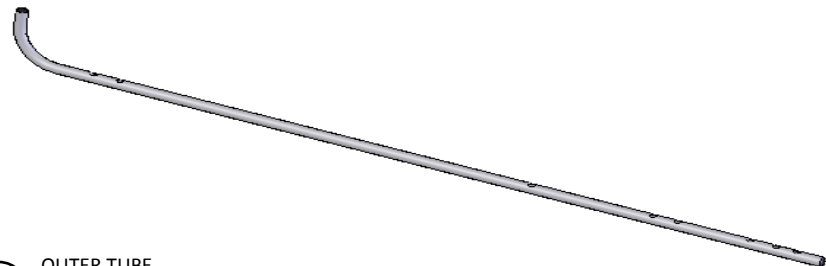
**Review this document to ensure that all parts and hardware are included in the package, before installation.**  
In the event that parts are missing please contact Masterack @ 1-800-222-8785, to re-order missing parts.



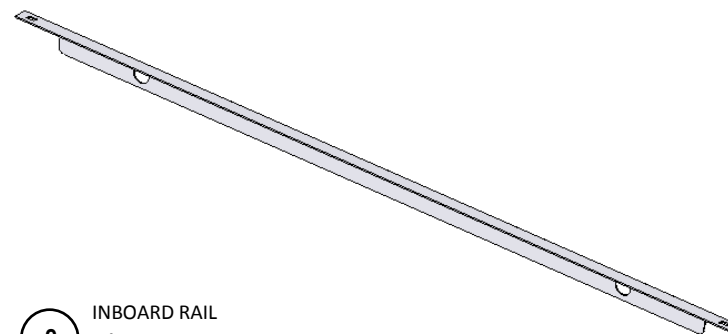
**SINGLE LOCKING LADDER RACK**



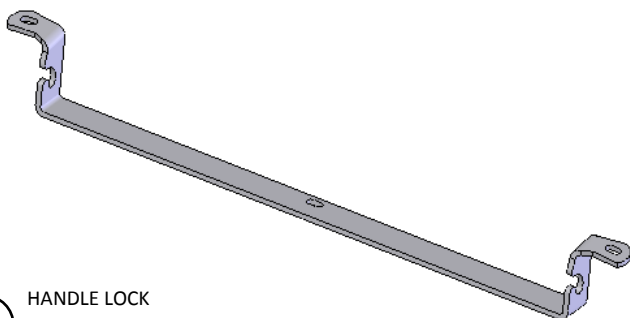
## COMPONENTS



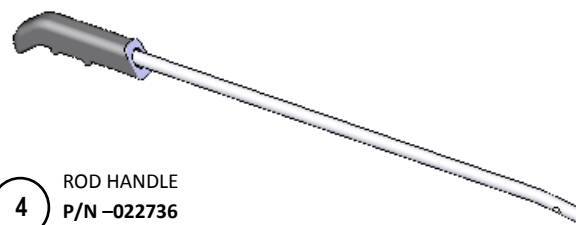
1 OUTER TUBE  
P/N -022735



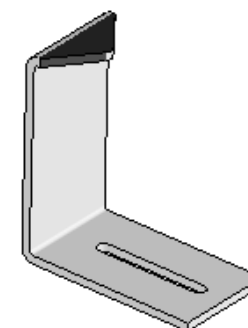
2 INBOARD RAIL  
P/N -022741



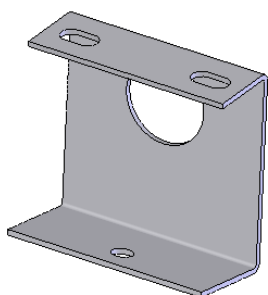
3 HANDLE LOCK  
P/N -022740



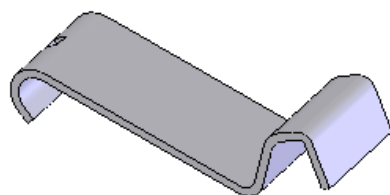
4 ROD HANDLE  
P/N -022736



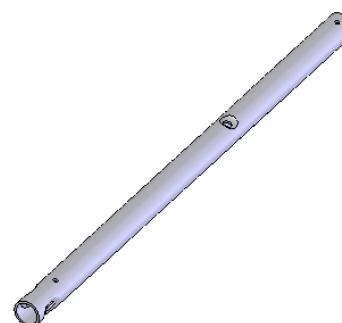
5 FRONT STOP  
P/N -025719



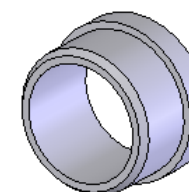
6 AXLE HOUSING  
P/N -022739



7 RUNG HOOK  
P/N -022737

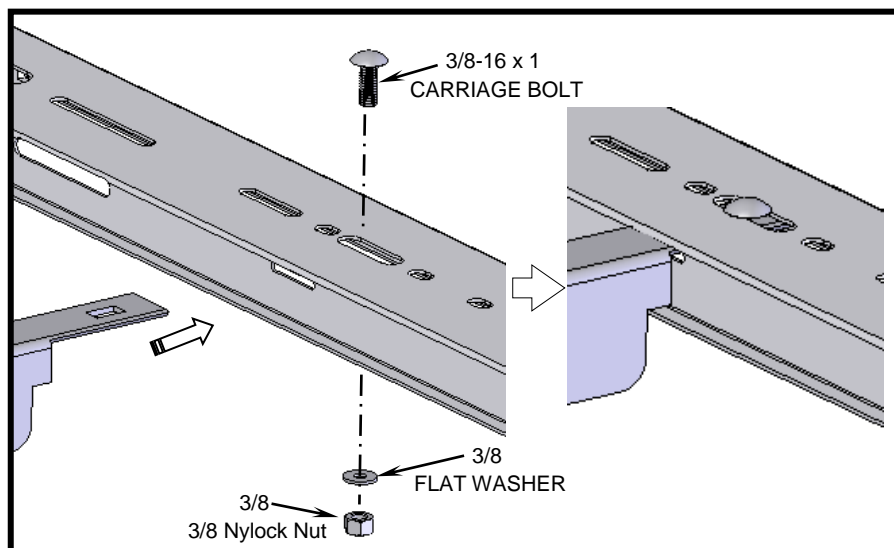


8 AXLE TUBE  
P/N -022742



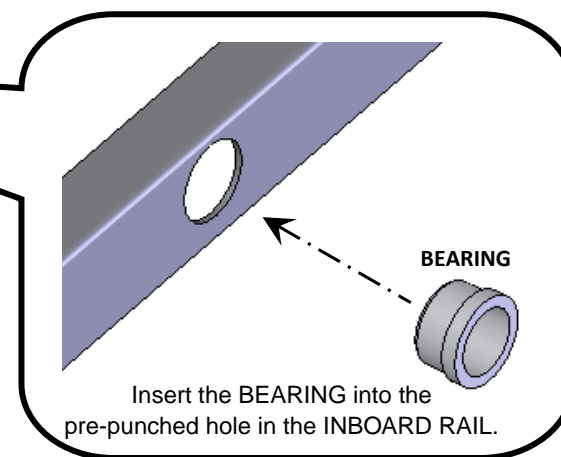
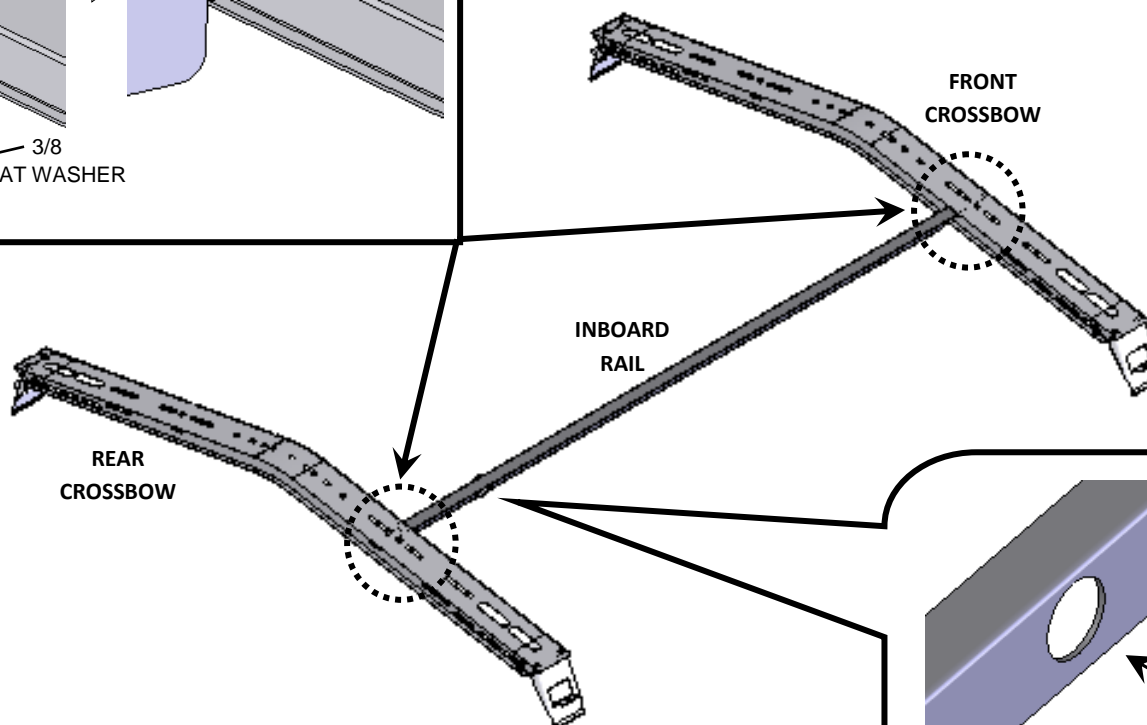
9 BEARING  
P/N -RM541123

## ATTACHING INBOARD RAIL

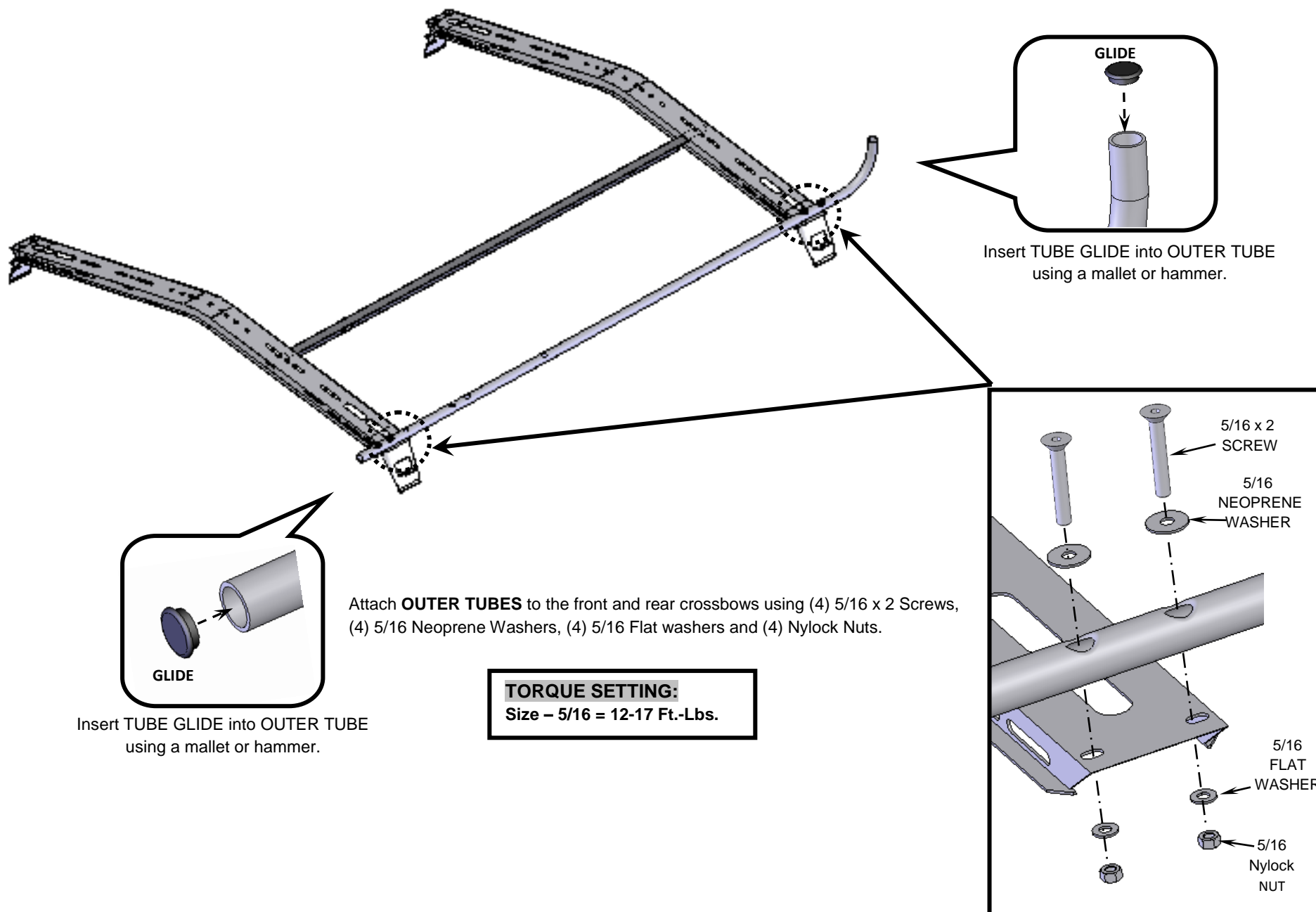


Locate (2) INBOARD RAIL and (2) BEARING.  
Insert the BEARING into the pre-punched hole in the INBOARD RAIL.  
Insert each end of the Inboard Rail, into the slots in the Front and Rear Crossbows and secure with (4) 3/8 x 1 Carriage Bolts, (4) 3/8 Flat washers and (4) 3/8 Nylock Nuts

**TORQUE SETTING:**  
Size - 3/8 = 22-30 Ft.-Lbs.



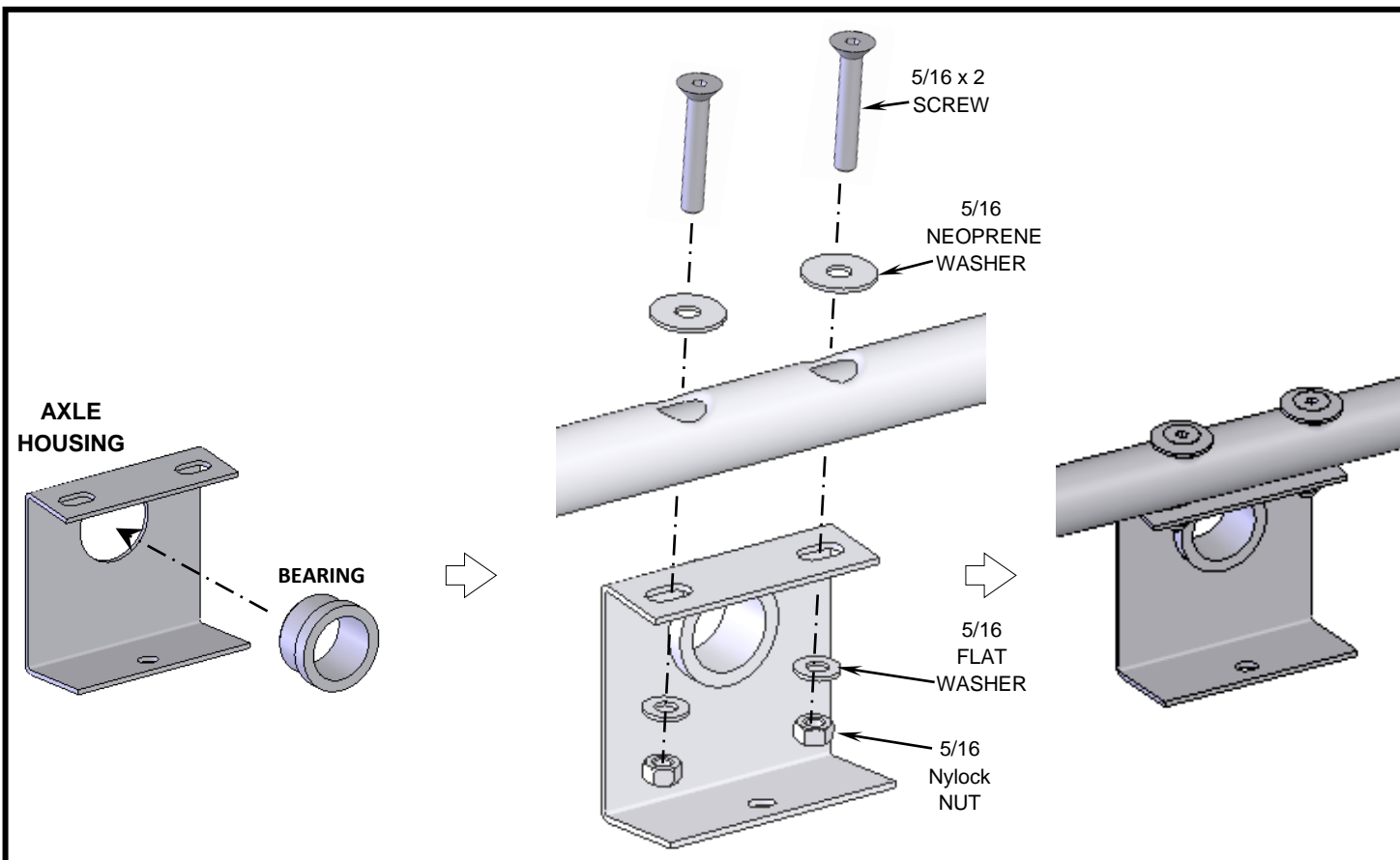
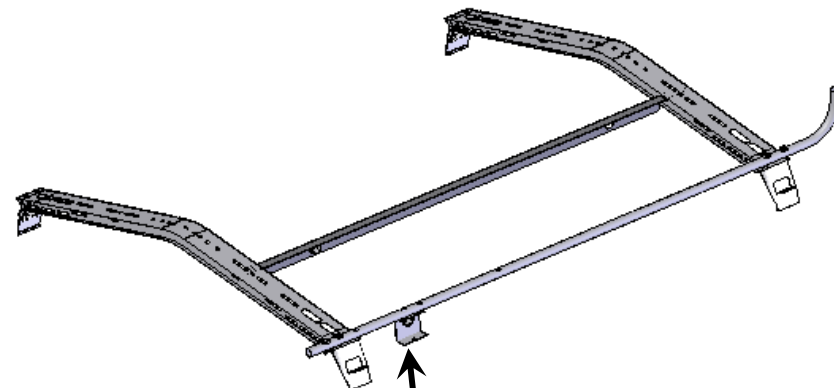
## ATTACHING OUTER TUBE



## ATTACHING AXLE HOUSING

Insert **BEARING** into the **AXLE HOUSING** as shown, next attach the **AXLE HOUSING** to the **OUTER TUBE** using (2) 5/16 x 2 Cap screws, (2) 5/16 Neoprene Washers, (2) 5/16 Flat Washers and (2) Nylock Nuts.

**TORQUE SETTING:**  
Size – 5/16 = 12-17 Ft.-Lbs.



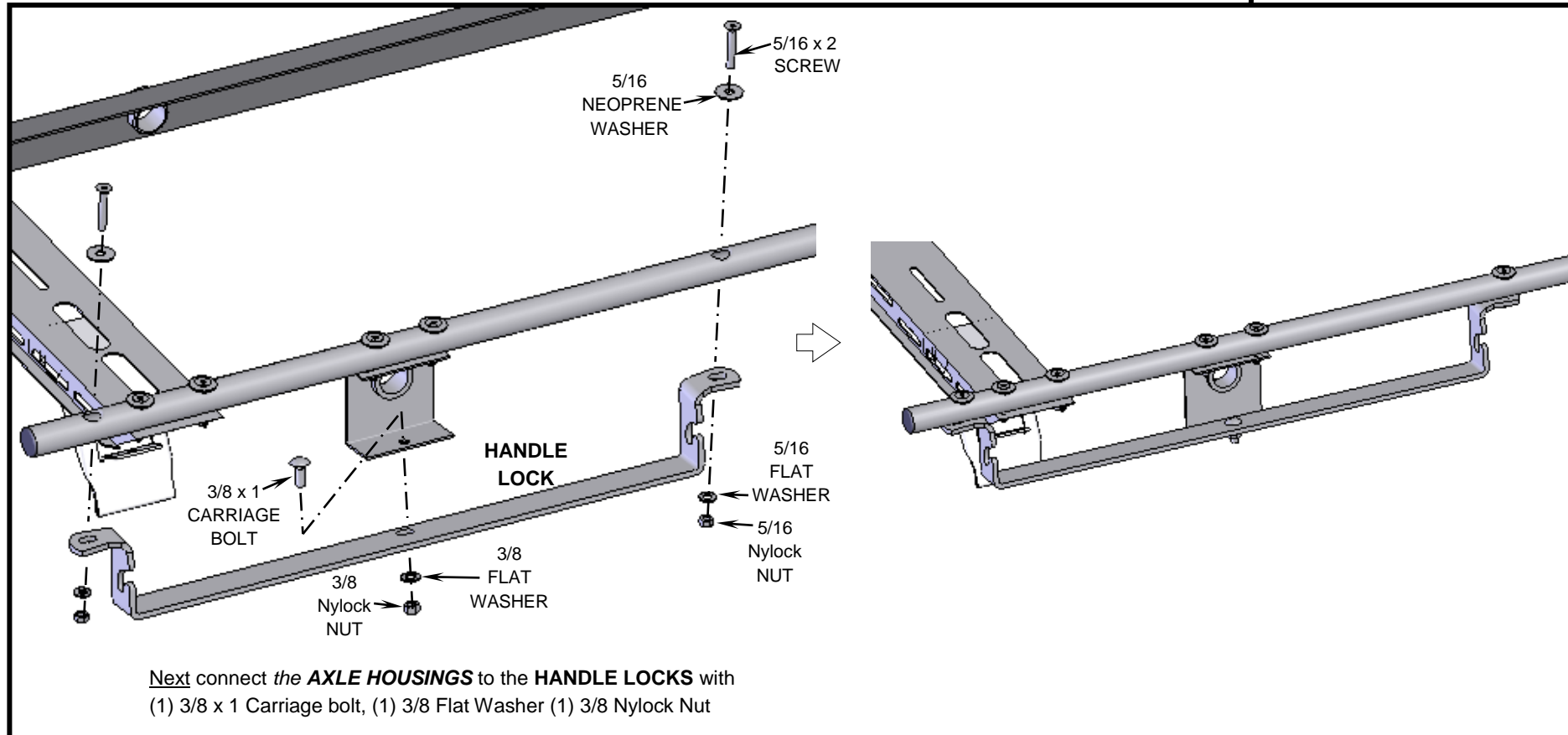
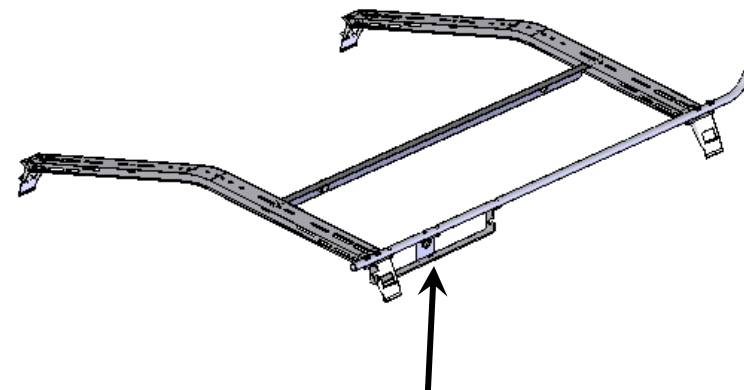
## ATTACHING HANDLE LOCK

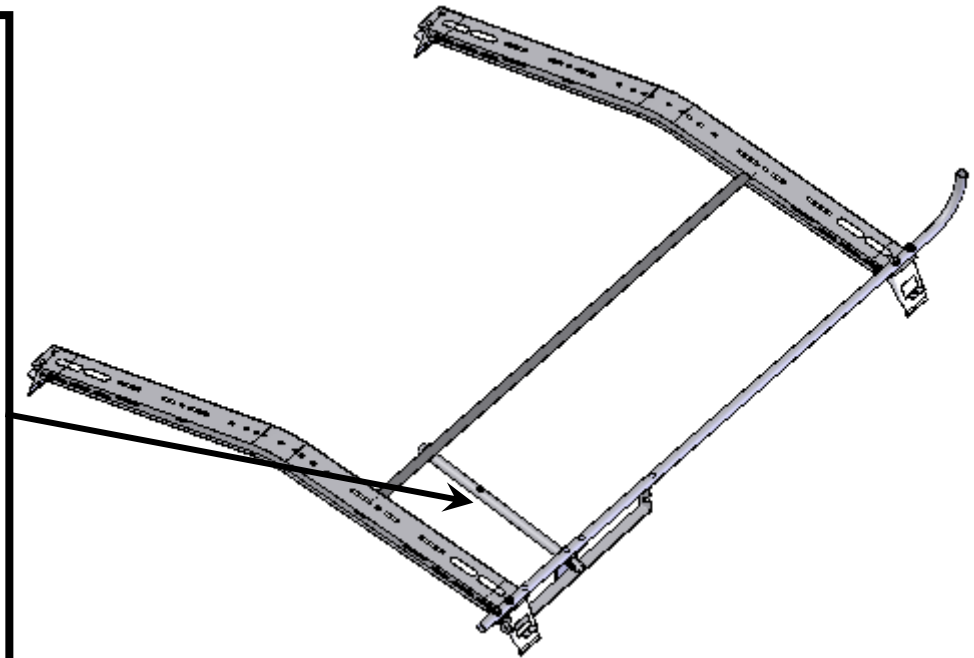
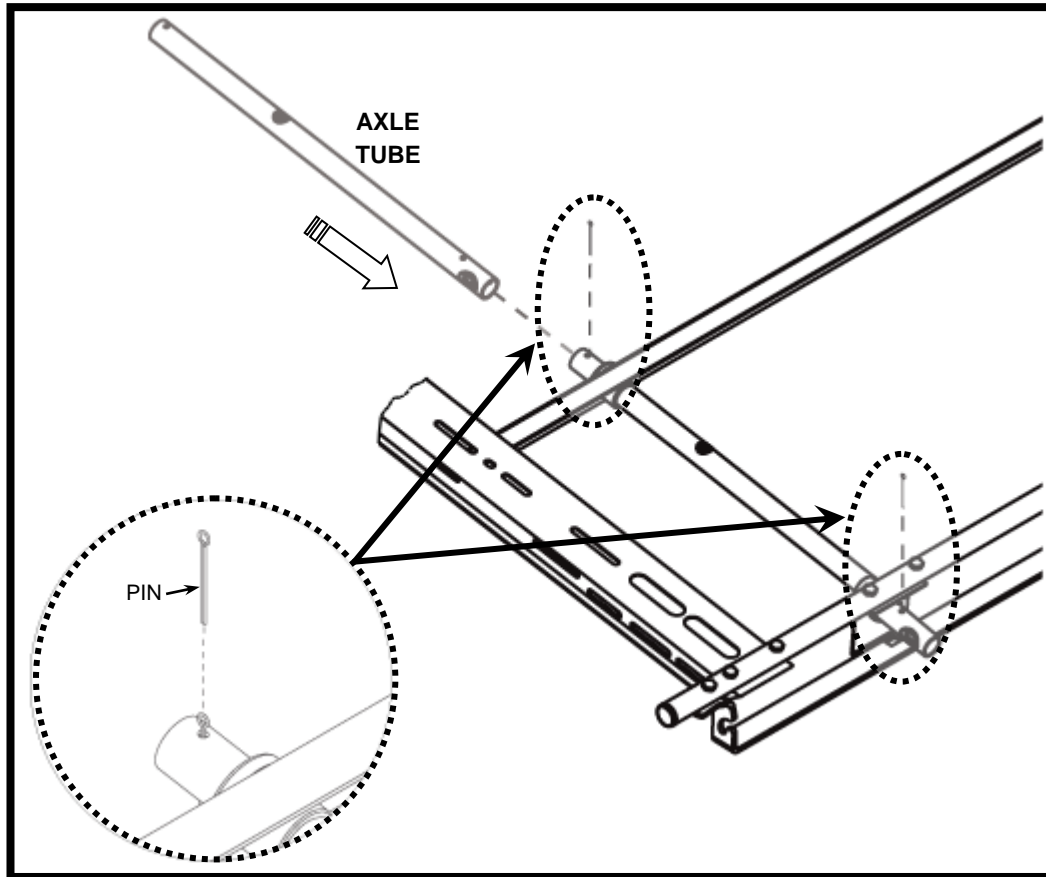
Position **HANDLE LOCK** as shown here and attach to **OUTER TUBE** using  
(2) 5/16 x 2 Cap Screws, (2) Neoprene Washers, (2) 5/16 Flat Washers and (2) Nylock Nuts.

### TORQUE SETTING:

Size – 5/16 = 12-17 Ft.-Lbs.

Size – 3/8 = 22-30 Ft.-Lbs.



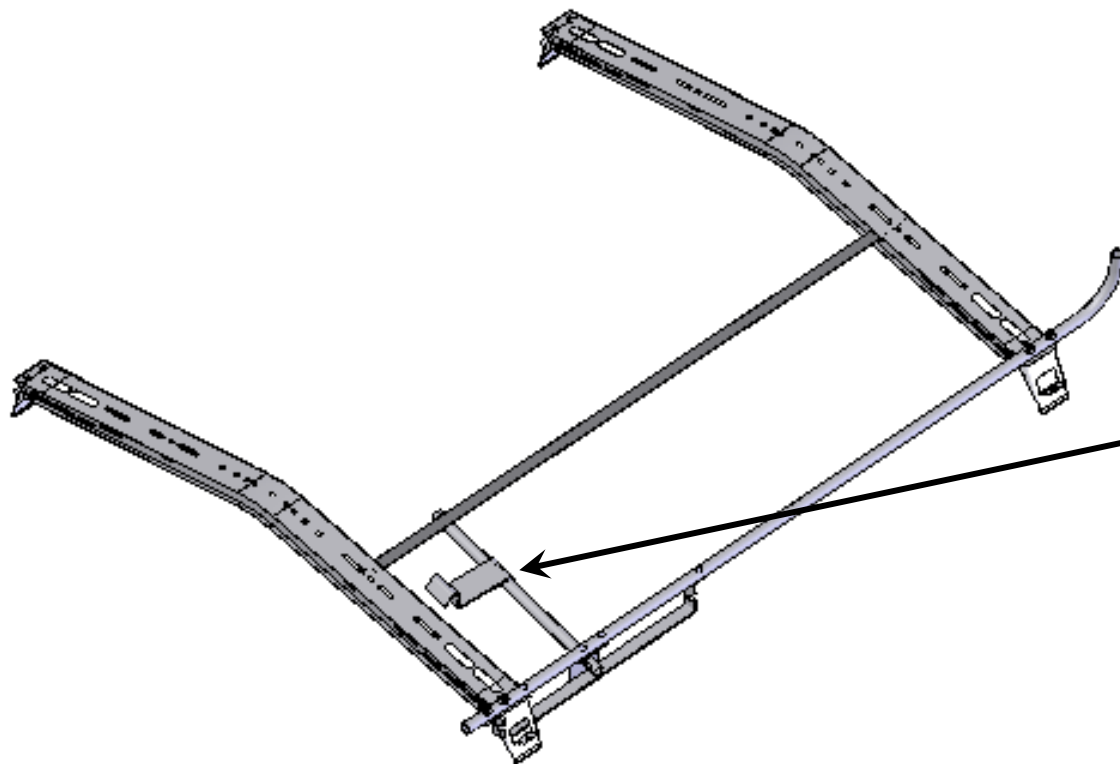


Slip **AXLE TUBE** through the Bearings in the Axle Housing and the Inboard Rail and secure with (4) 3/16 x 2 Pins.



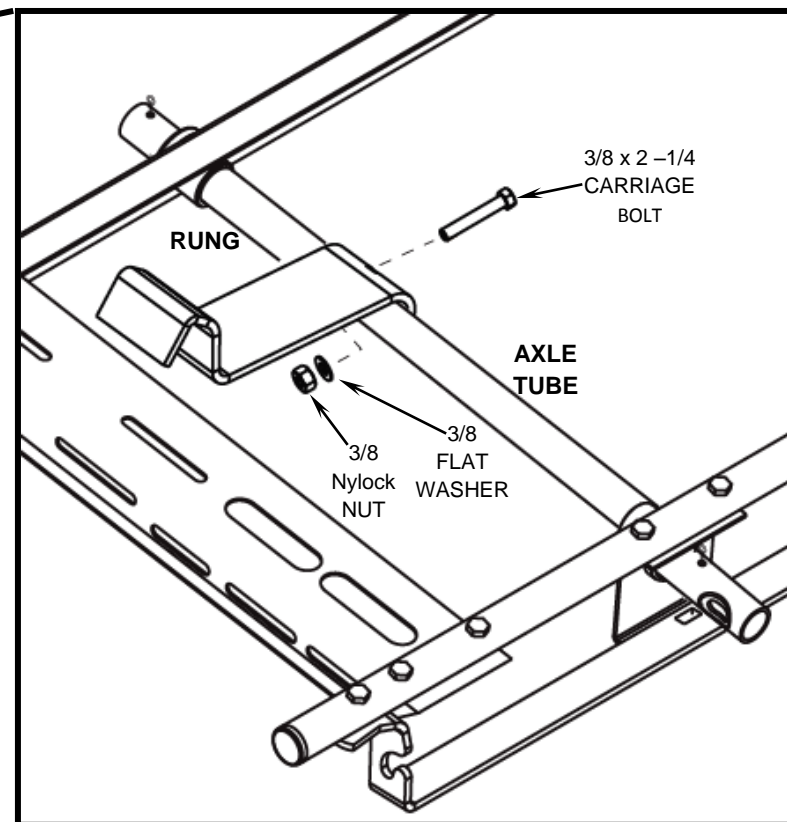


## ATTACHING RUNG HOOK

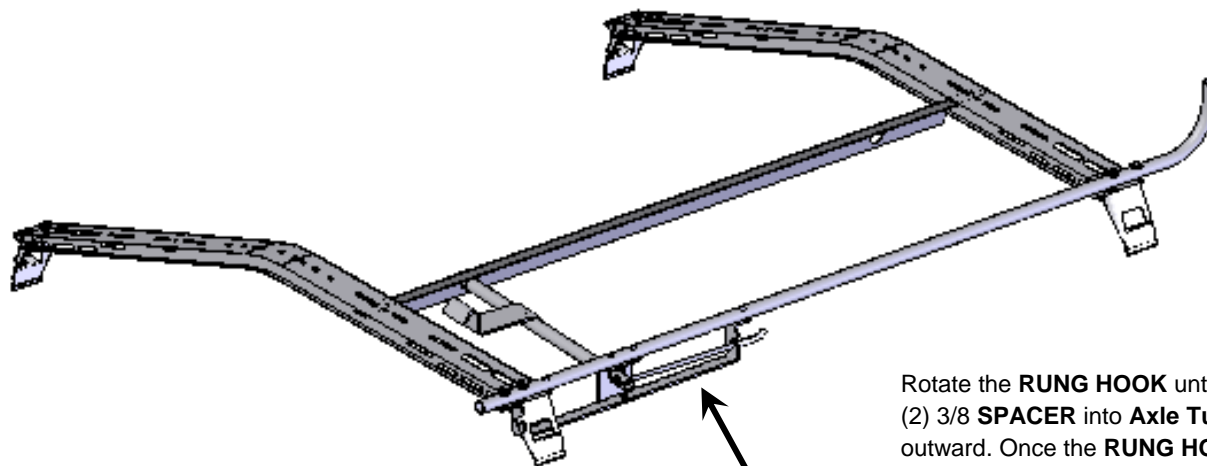


**TORQUE SETTING:**  
Size - 3/8 = 22-30 Ft.-Lbs.

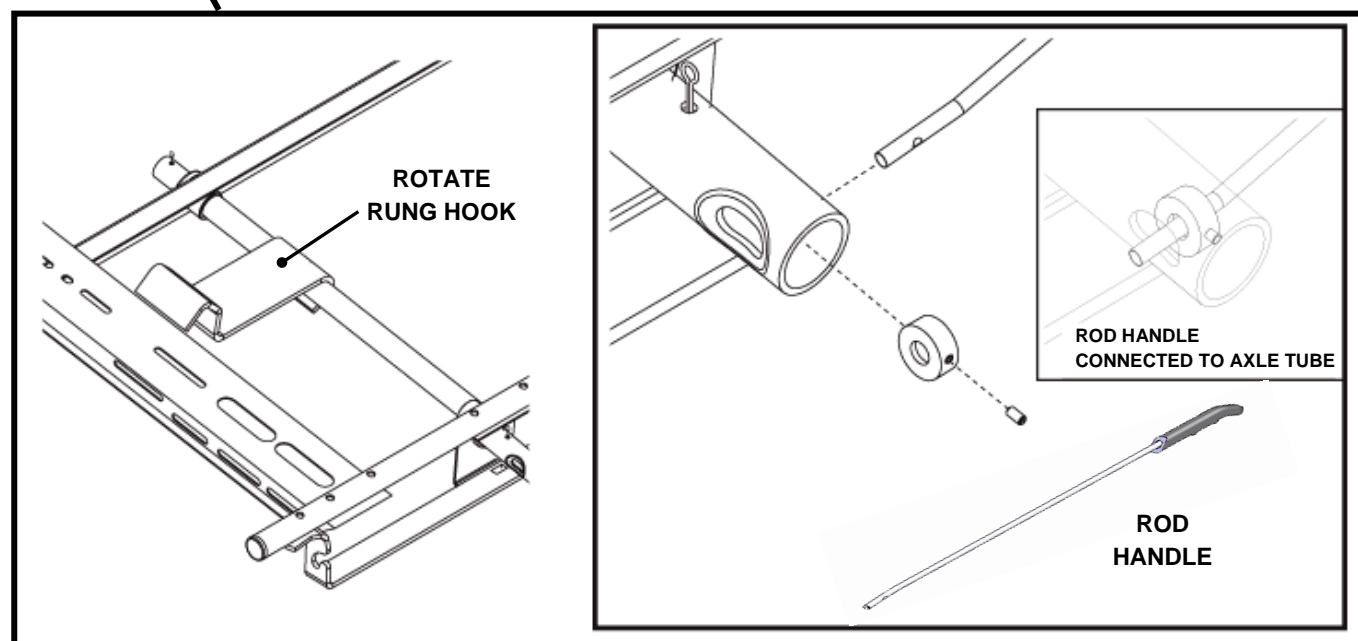
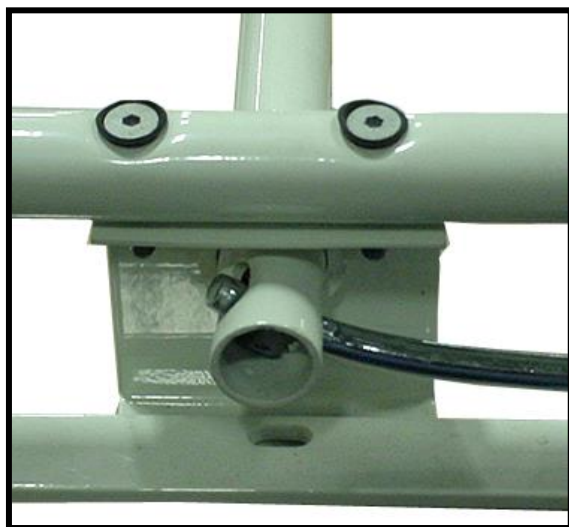
Place **RUNG HOOK** on the **AXLE TUBE** and attach with (1) 3/8 x 2-1/4 Carriage Bolt, (1) 3/8 Flat washer and (1) Nylock Nut



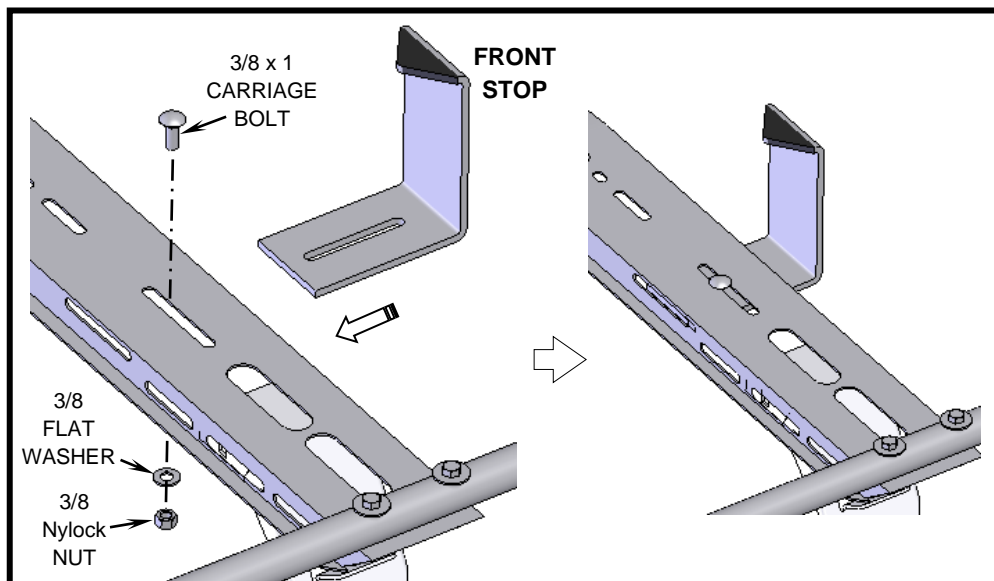
## ATTACHING ROD HANDLE



Rotate the **RUNG HOOK** until it rests on the rear crossbow as shown. Insert (2) 3/8 **SPACER** into **Axle Tube** and orient so that the hole in the Spacer is facing outward. Once the **RUNG HOOK** is positioned properly, insert the **ROD HANDLE** through the **Axle Tube** and the Spacer so that it seats in the predrilled area in the **Rod Handle**. The **Rod Handle** should now lock into the forward lock position on the Handle Lock.



## ATTACHING FRONT STOP

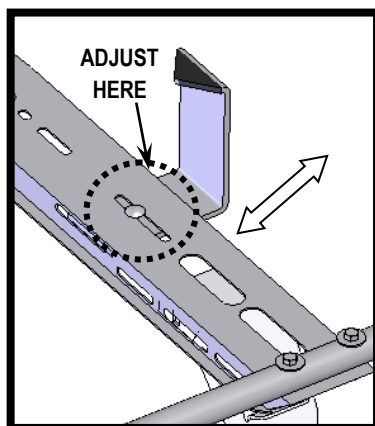


Insert the **FRONT STOP** through the slot in the Front Crossbow, and align so that the vertical section of the Front Stop touches the Crossbow. Secure with (1) 3/8 x 1 Carriage bolt, (1) 3/8 Flat Washer and (1) 3/8 Nylock Nut.

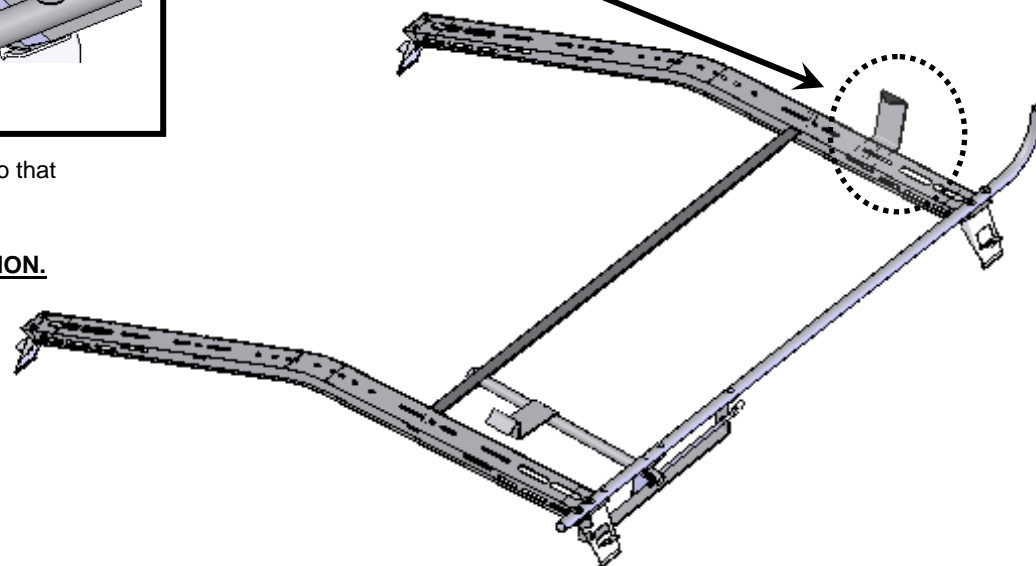
**NOTE: MAY REQUIRE FUTHER ADJUSTMENT FOR PROPER OPERATION.**

### TORQUE SETTING:

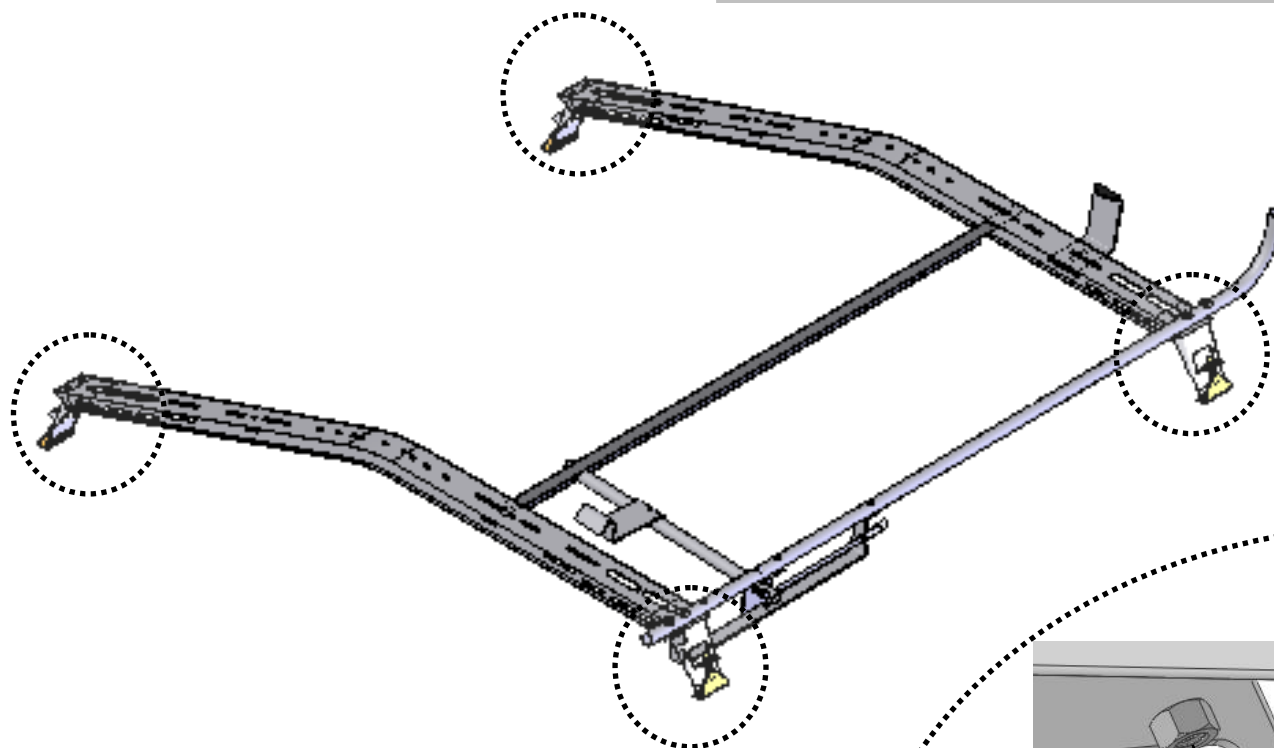
Size - 3/8 = 22-30 Ft.-Lbs.



It will be necessary to adjust the front stops to accommodate your ladder. Adjust front stop in for more tension and out to lessen tension

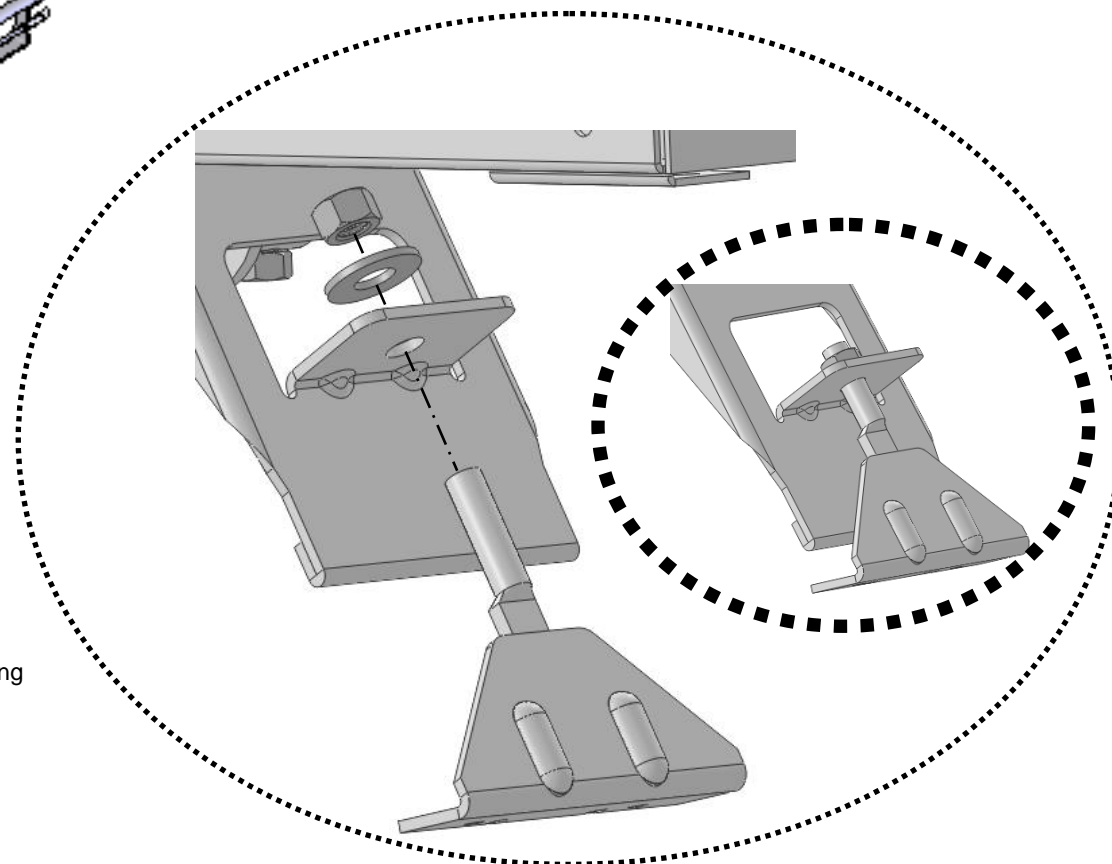


## ATTACHING OUTER CLAMPS

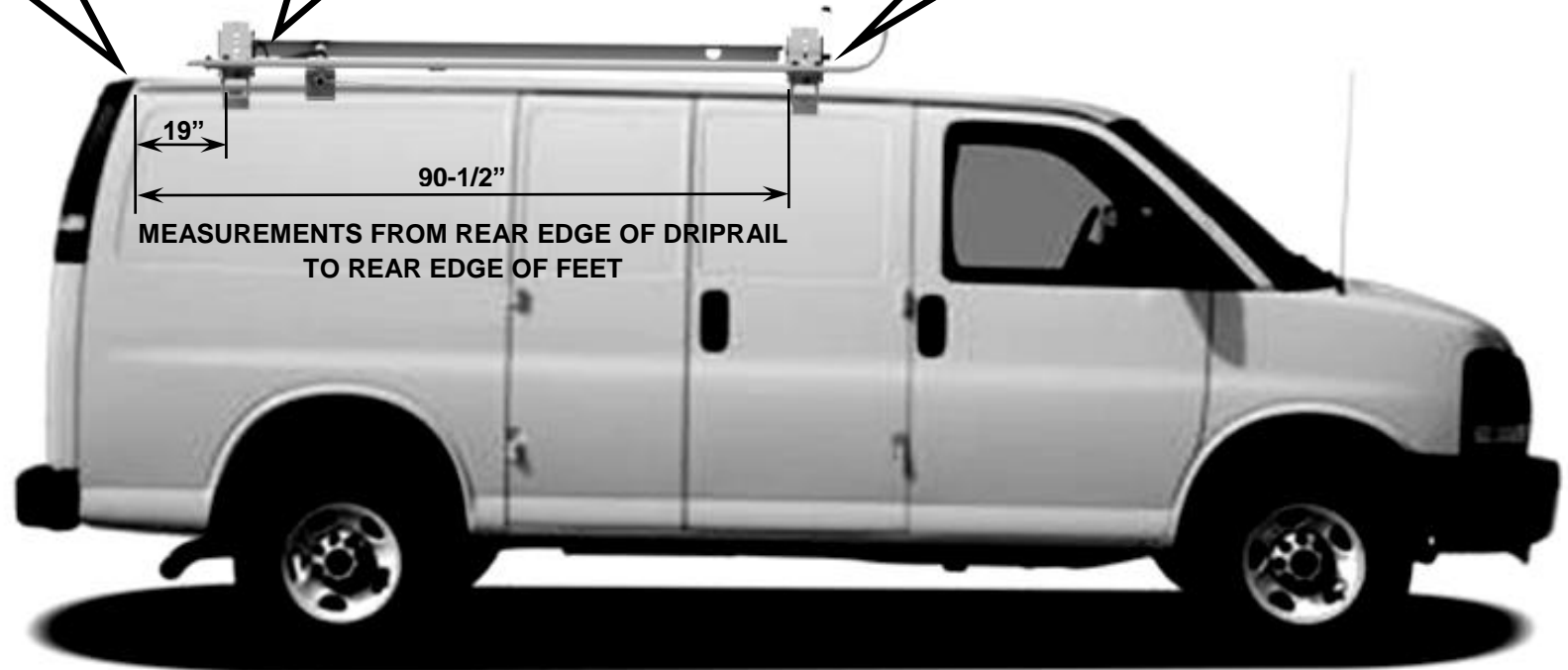
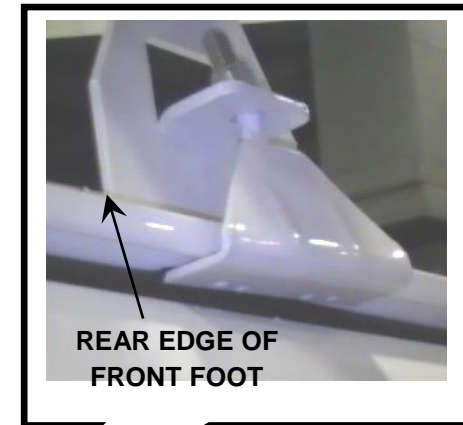
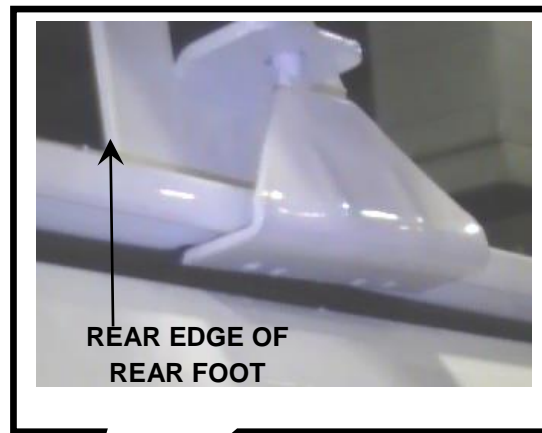


**Loosely** attach (4) **OUTER CLAMPS** at locations shown here using (4) 5/16-18 Flat Washers and (4) 5/16-18 Lock Nuts.

**TORQUE SETTING:**  
Size - 3/8 = 22-30 Ft.-Lbs.



PLACEMENT OF THE **ASSEMBLED** LADDER RACK ON VEHICLE



With **LADDER RACK** positioned properly on vehicle, tighten **OUTER CLAMPS** to secure.



### 3 Year / 36,000 Mile Limited Warranty

MASTERACK® commercial van and pickup equipment is warranted to be from defects in material and workmanship, under normal use and service for a period of one (1) year from date of purchase. Factory installations, and products installed in new vehicles by an authorized MASTERACK® installer are warranted for **(3) years or 36,000 miles (60,000 KM)**, whichever comes first. **This warranty covers only repairs, or at MASTERACKS' discretion, replacement to correct any defects related to materials and workmanship.**

#### **This warranty does not apply to:**

- Additions, alterations, or installations made by persons including dealers, other than MASTERACK® and its authorized distributors, made in accordance with MASTERACK® specifications and / or instructions, nor to defects arising out of attribute to such additions, alterations or installations.
- Defects attributable to abuse or misuse of the product, misapplication, negligent accident, modification or tampering.
- Damage resulting from failure to promptly notify and comply with the instructions of the dealer or manufacturer about defects when noted.
- Any incidental or consequential damages connected with a defect, either while under warranty or afterward, including the cost of a rental truck and / or loss or revenue.

**THE WARRANTY IS THE ONLY WARRANTY APPLICABLE TO A MASTERACK PRODUCT PURCHASE. ALL OTHER WARRANTIES, EXPRESSED OR IMPLIED, INCLUDING BUT NOT LIMITED TO, THE IMPLIED WARRANTIES OR MERCHANTABILITY AND FITNESS FOR A PARTICULAR PURPOSE ARE DISCLAIMED. MASTERACK® AND ITS SUBSIDIARIES, SHALL NOT BE LIABLE FOR ANY INCIDENTAL OR CONSEQUENTIAL DAMAGES ARISING OUT OF ANY BREACH OF THIS WARRANTY, NOR SHALL THE DAMAGES EXCEED THE RETURN AMOUNT OF THE PURCHASE PRICE PAID BY THE ORIGINAL PURCHASER.**

Warranty claims must be submitted to either your sales representative or a customer service representative at **1-800-222-8785**. The vehicle must be delivered to the original MASTERACK® authorized dealer for inspection and any warranty service. Any warranty service to be performed by a source other than MASTERACK® location or an approved MASTERACK® distributor must be authorized in advance of the repairs by the MASTERACK® Warranty Administrator and a purchase order issued by MASTERACK® in advance of repairs for the authorized repairs.