

WI-02T333KP

CARGO GUARD ASSEMBLY INSTRUCTIONS -TACOMA



- HEADER PLATE ASSY
- BED SLIDE FRAME ASSY
- BED SLIDE ASSY
- TOOLBOX STD (RS) ASSY
- TOOLBOX STD (CS) ASSY
- TOP COVER ASSY
- LADDER RACK ASSY
- EXTENSION L/R ASSY

STANDARD TORQUE TABLE

SIZE	TIGHTENING TORQUE
1/4-20 (.250)	8 ft lbs.
5/16-18 (.3125)	17 ft lbs.
3/8-16 (.375)	30 ft lbs.
Bed bolts M12 (Taken from Catalog)	60 ft lbs.

WI-02T333KP

HEADER PLATE ASSY 02T343 INSTALLATION PROCEDURE

Step-1: Remove existing rail

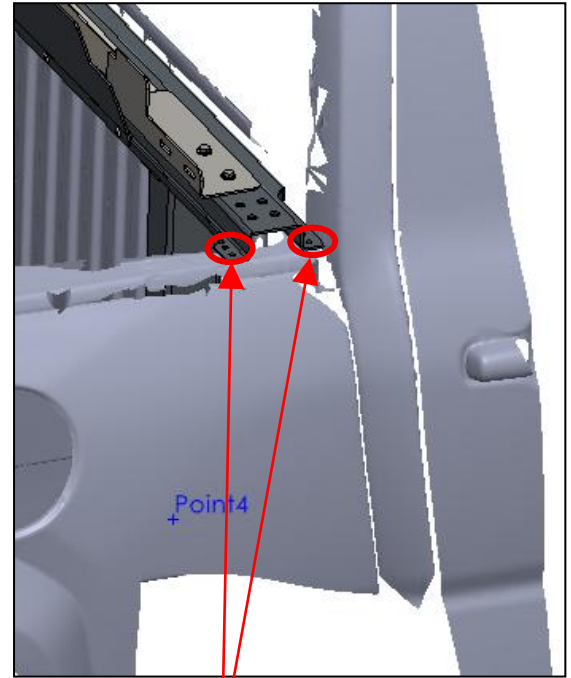
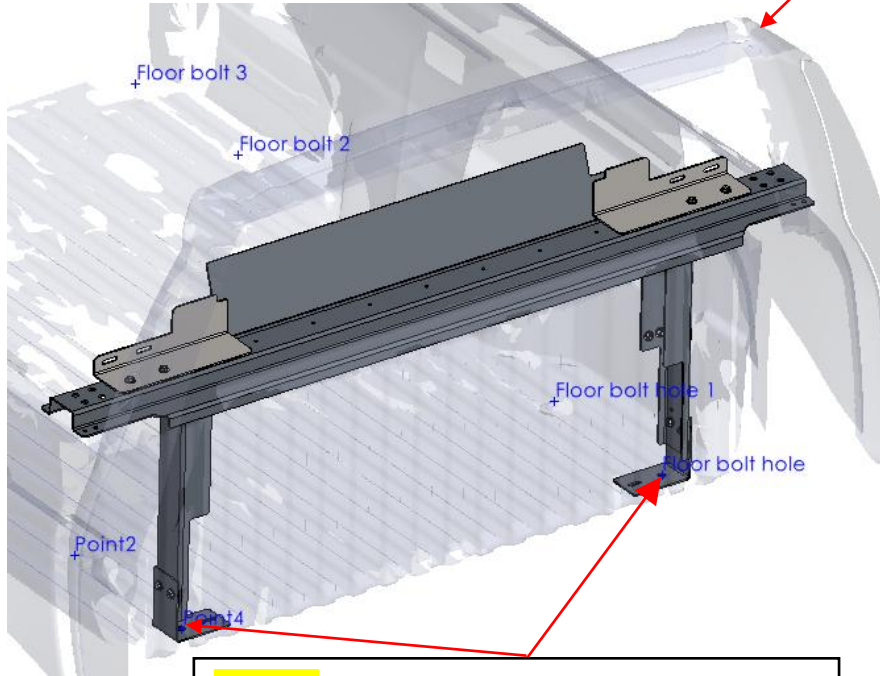


CAB SIDE

CAB

Use 5/16 washer Wherever elongated hole is there

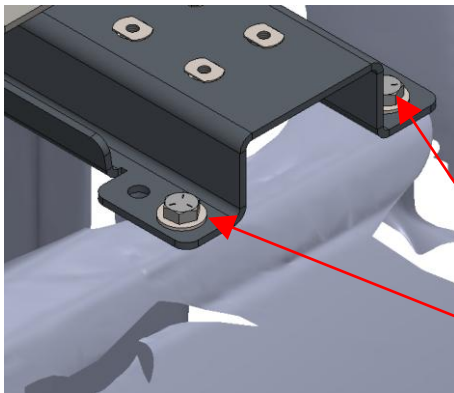
Apply blue Loctite 242 or 243 wherever plus nut is used



Step-3: Header plate C channel mounting to the existing pickup Floor bolts

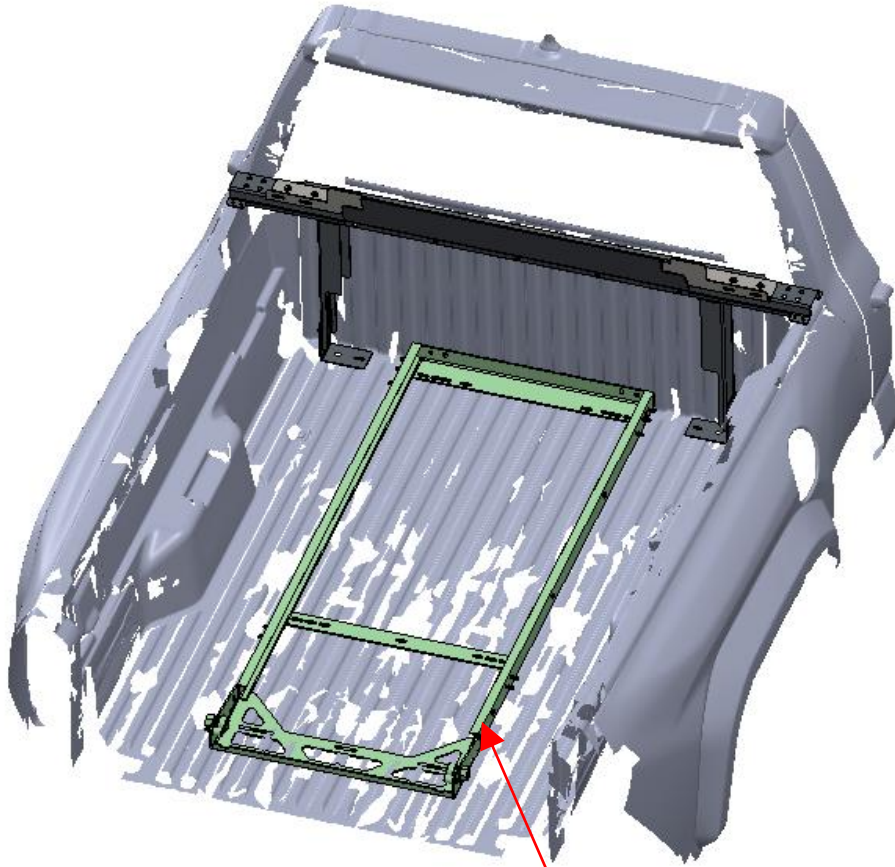
Step-2: Mark the hole position on the top surface of the pickup. Drill through the pickup top to insert a 5/16-18 plus nut on both the CS and RS sides. After that, place the header plate channel on the top surface of the pickup and tighten it using 5/16-18 hardware's.

Use first hole for the Tacoma mountings both CS & RS

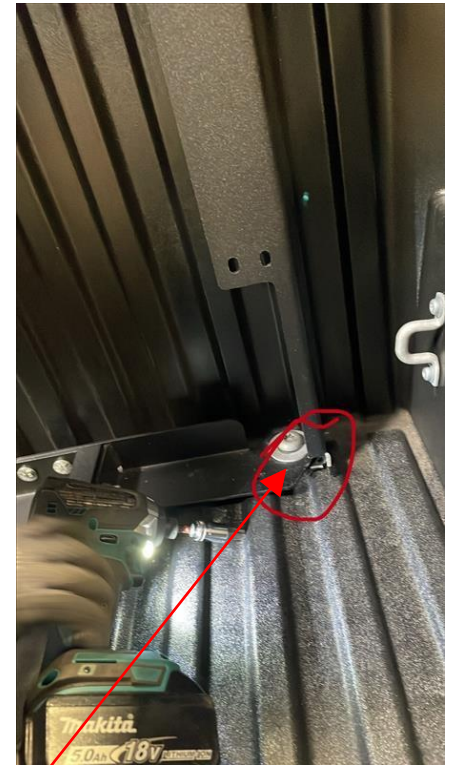


Floor bolts cab side

BED SLIDE FRAME INSTALLATION PROCEDURE (10-7041)



BED SLIDE FRAME



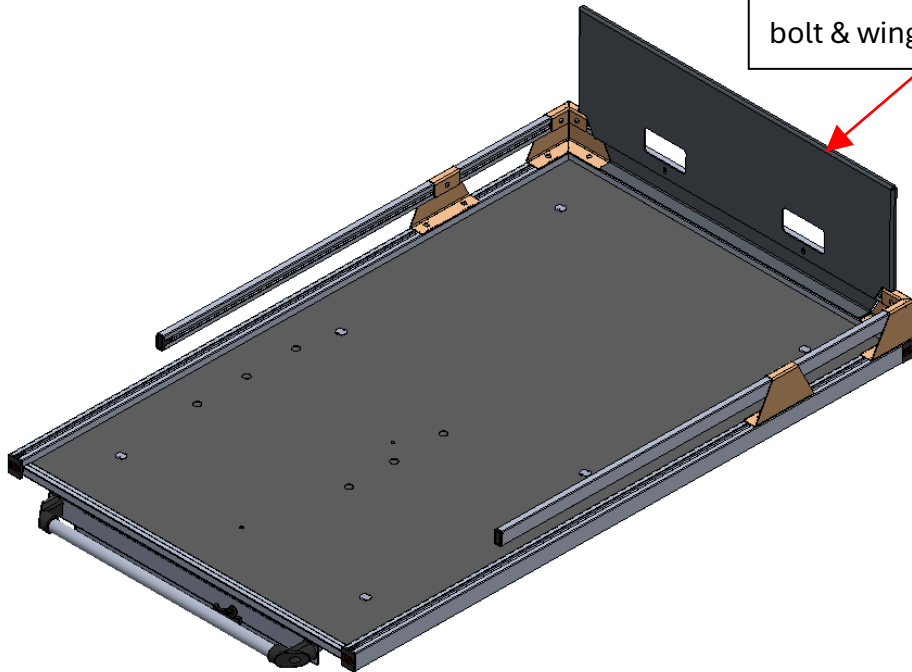
Mount the bed slide frame to floor bolts at cab side with attachment bracket and aligned with the header plate C channel. and tail gate side mount to floor bolt's location.

WI-02T333KP

BED SLIDE INSTALLATION PROCEDURE (10-7041)

Use washer Wherever elongated hole is there

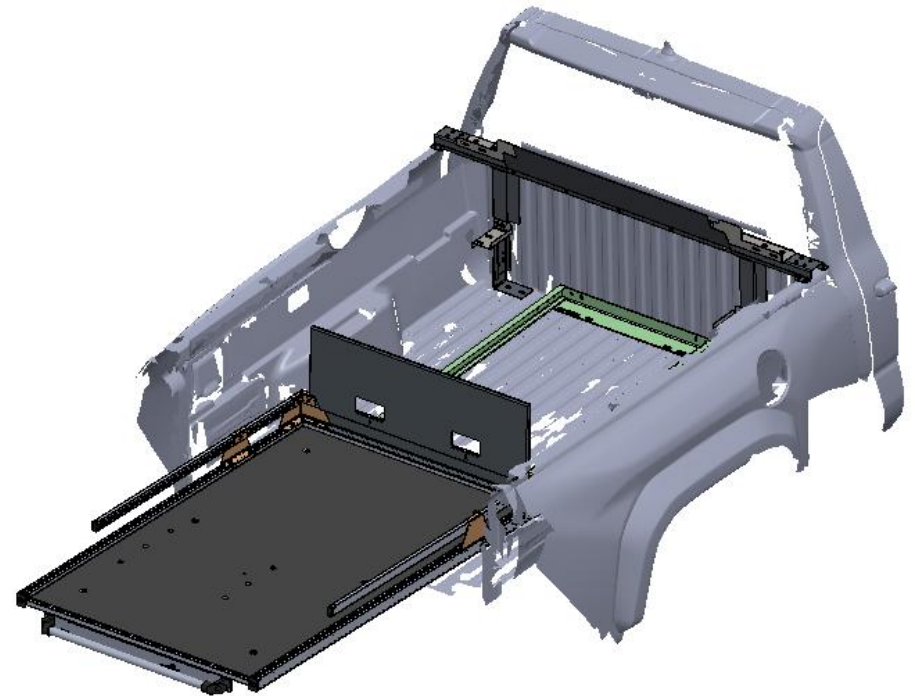
Drill the holes on the bed slide rail & mount the Bulkhead with 1/4 -20 bolt & wing nuts



Install the bulkhead on to the bed slide

BED SLIDE SUB ASSY

Cab side

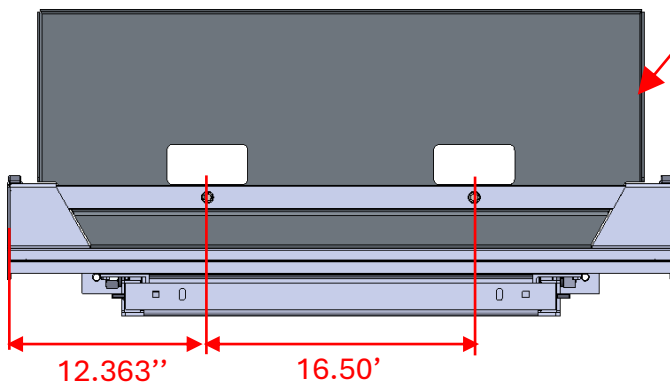


BULKHEAD INSTALLATION

BULKHEAD

Tail gate side

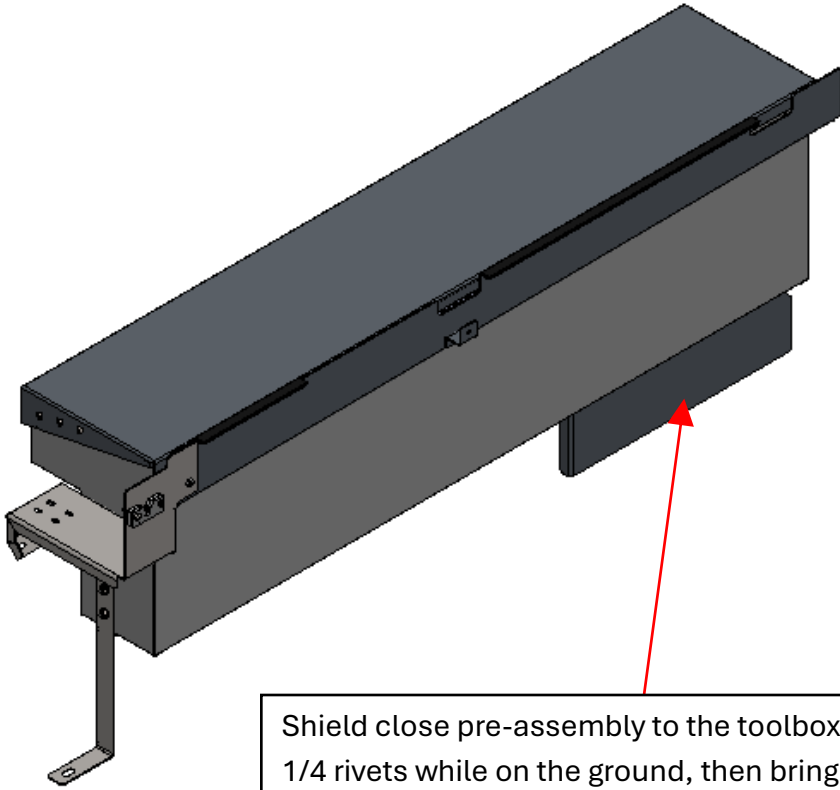
Install the bed slide **sub-assembly** into frame in the pickup



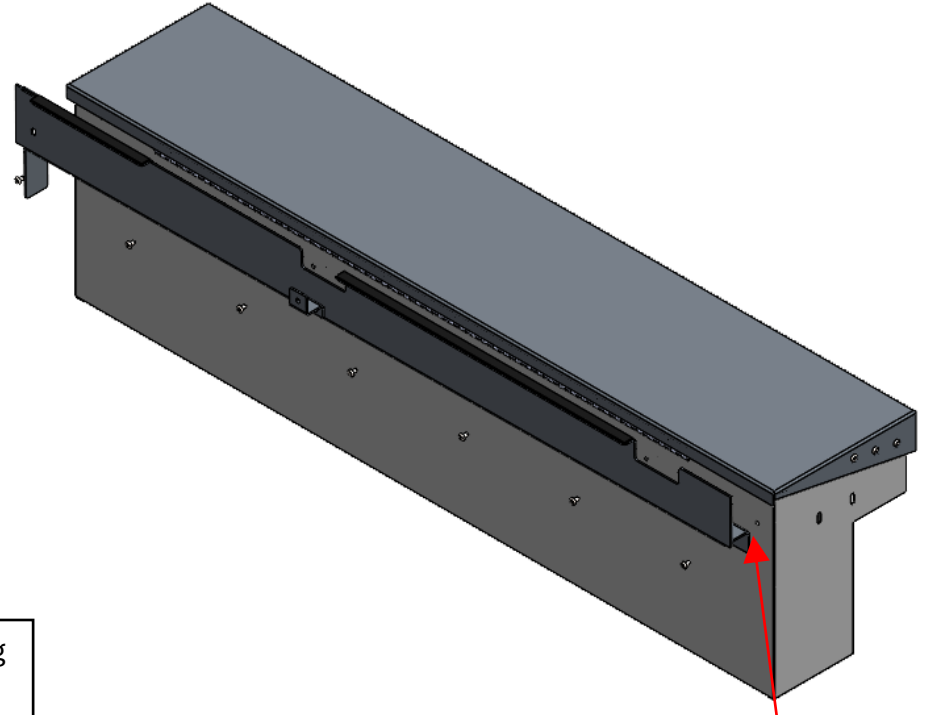
Hardware's will be provided along with Bulkhead

Refer to Page 15 of 15 for Installation of water tank and backpack sprayer rack

SHIELD CLOSE AND Z BRACKET INSTALLATION PROCEDURE RS & CS



Shield close pre-assembly to the toolbox Assy using 1/4 rivets while on the ground, then bring the entire assembly and mount it onto the pickup



Apply marine-grade adhesive RM460391 between the brackets and the tread face of the toolbox, as well as below the mounting holes. **Ensure the adhesive does not squeeze out after the brackets are tightened with rivets**

WI-02T333KP

TOOLBOX STD (RS) ASSY 02T556 INSTALLATION PROCEDURE

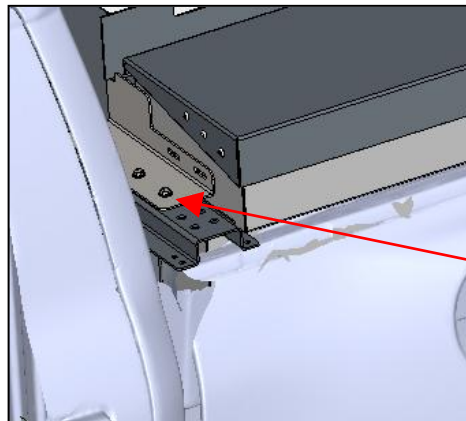
Wherever toolbox mounting to the brackets
Use 5/16 washer while Assembly

Apply blue Loctite 242 or 243
wherever plus nut is used

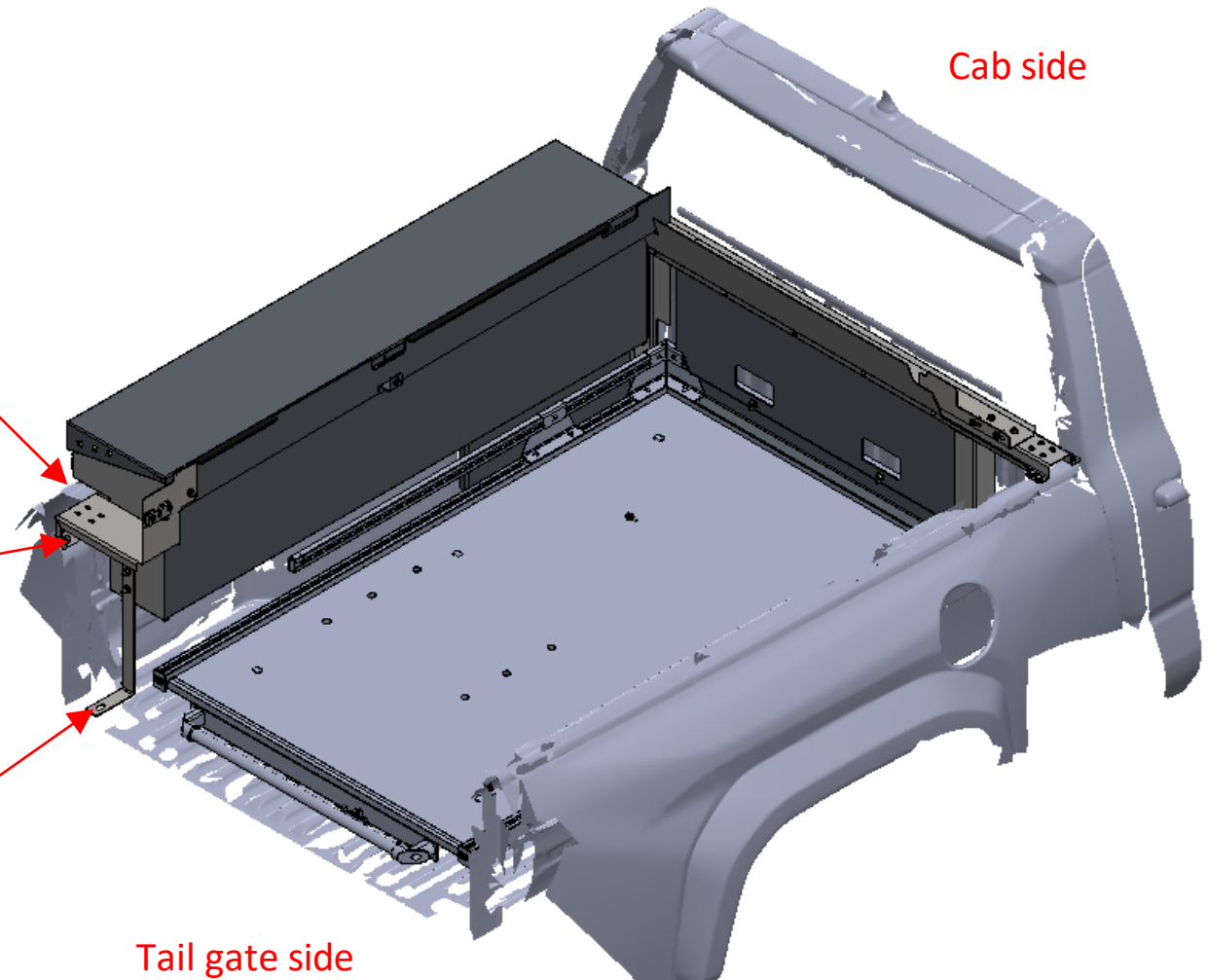
Step-1: Toolbox rest on the top
surface of the pickup wall

Step-3: Mark the hole position through the
side mount Bracket (02T317). Drill the hole
on the markings & insert plus nut 5/16-18 RS
after that rear Side bracket mounting to the
side Wall of the pickup & tightened using
5/16-18X0.75 bolt (**do not tight fully ***).

Step-4: Bottom bracket (02T340) mounting to
the existing pickup floor bolt's locations



Step-2: Toolbox mounting to the
front side Bracket (02T558) &
tightened using 5/16-18X0.75
bolt and nut (**do not tight fully ***).



***Once the toolbox is properly aligned with the
brackets on both the cab side and the tailgate
side, ensure all hardware's is securely
tightened as per the torque values specified.**

WI-02T333KP

TOOLBOX STD (CS) ASSY 02T557 INSTALLATION PROCEDURE

CAB side

Wherever toolbox mounting to the brackets
Use 5/16 washer while Assembly

Apply blue Loctite 242 or 243
wherever plus nut is used

Step-1: Toolbox rest on the top
surface of the pickup wall

Step-3: Mark the hole position through the
side mount Bracket (02T222). Drill the hole
on the markings & insert plus nut 5/16-18
CS after that rear Side bracket mounting to
the side Wall of the pickup & tightened
using 5/16-18X0.75 bolt.

Step-4: Bottom bracket (02T340) mounting
to the existing floor bolt's locations

Tail gate side

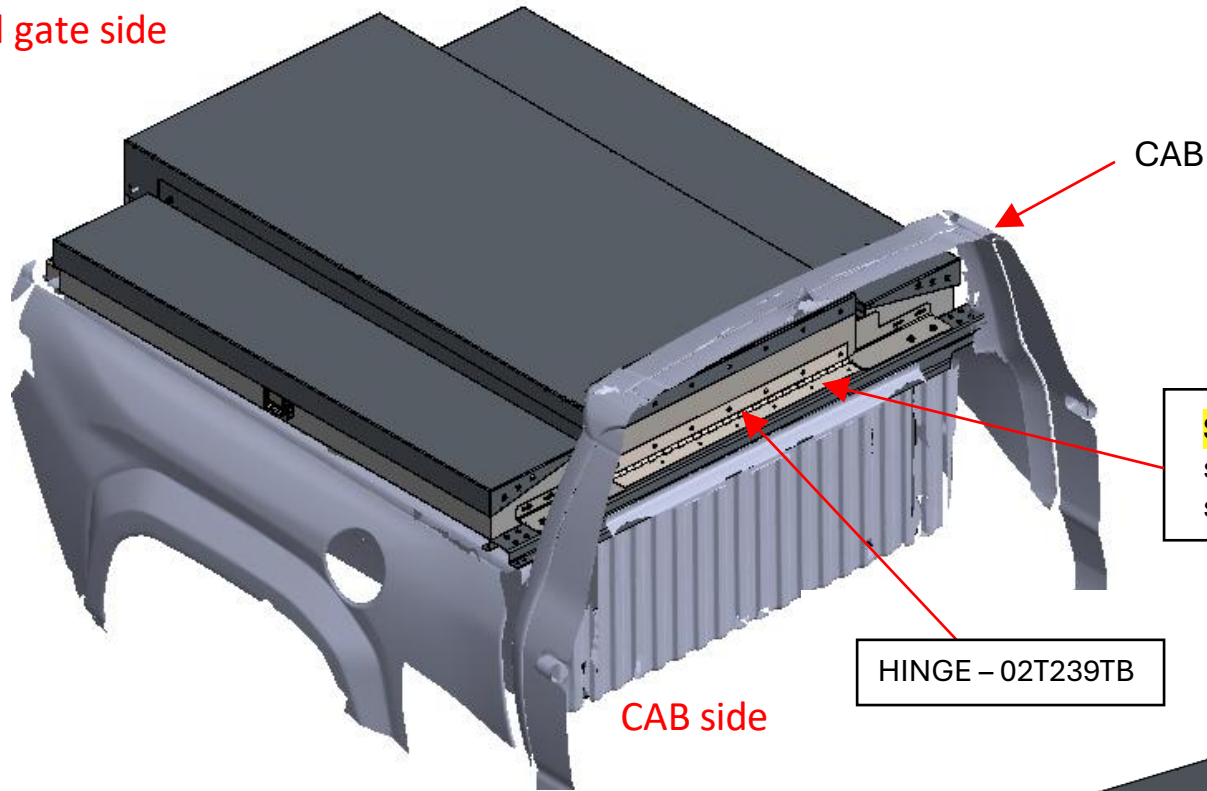
Ensure guide block is
installed on both RS & CS

Step-2: Toolbox mounting to the
front side Bracket (02T559) &
tightened using 5/16-18
Hardware's (**do not tight fully** *).

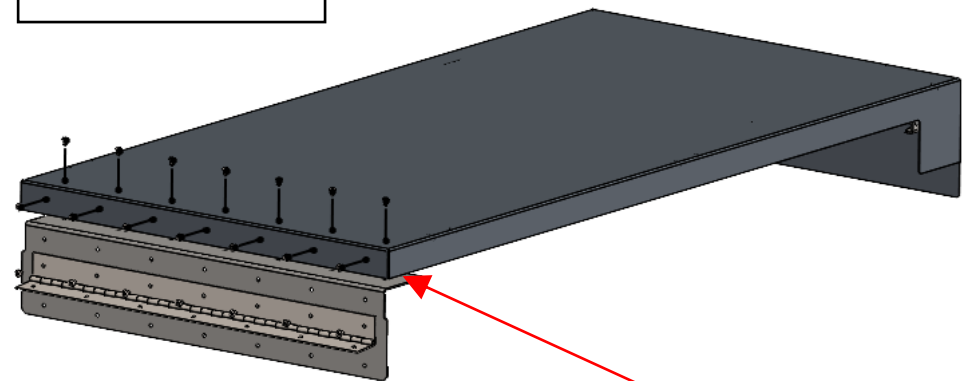
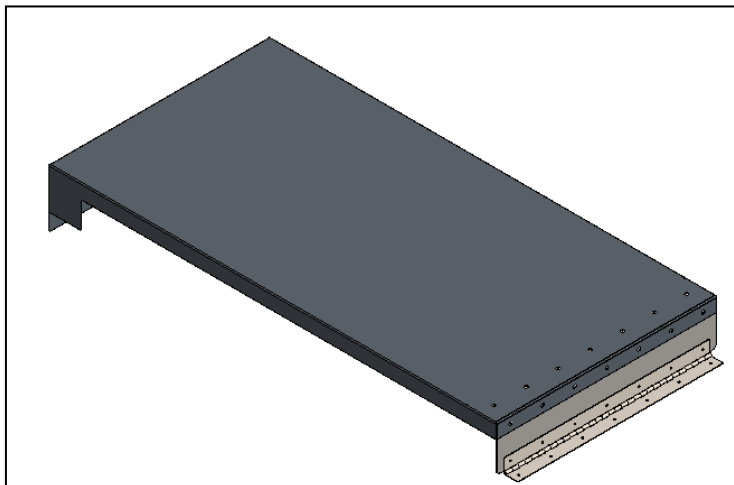
***Once the toolbox is properly aligned with the
brackets on both the cab side and the tailgate
side, ensure all hardware's is securely tightened
as per the torque values specified.**

TOP COVER ASSY 02T241 INSTALLATION PROCEDURE

Tail gate side



Step-1: Hinge leaf mounted on the top surface of the header plate channel and secured with 1/4" rivets



Apply marine-grade adhesive RM460391 between the top cover weldment & the face of top cover back panel, then tightened with the rivets

WI-02T333KP

LADDER RACK ASSY BRACKETS INSTALLATION PROCEDURE

Mount the Ladder rack upright mounting brackets in the Cab side using 5/16-18 plus nut & 5/16-18 Hardware's. **(Do not tighten fully *)**

Use 5/16 washer Wherever elongated hole is there

Apply blue Loctite 242 or 243 wherever plus nut is used

Cab side

SHORT LENGTH BRACKET 02T270 ON BOTH RS & CS

LONG LENGTH BRACKET 02T266 ON BOTH RS & CS

Tail gate side

*** Refer page-10** Once the ladder rack vertical uprights are aligned with the brackets on both the CS & RS side, ensure all hardware's is securely tightened as per the torque values specified.

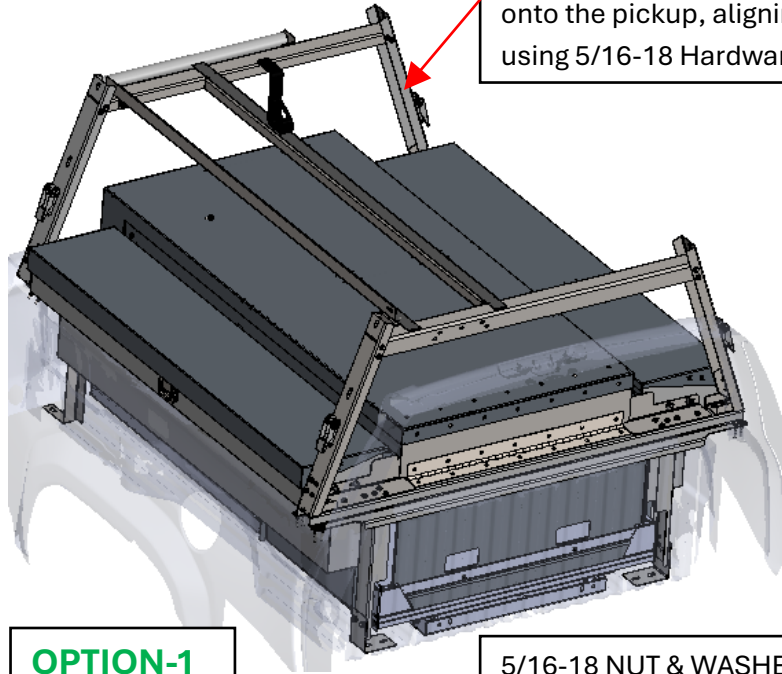
Mount the Ladder rack upright mounting brackets in the Tail gate side using 5/16-18 Hardware's. **(Do not tighten fully *)**

WI-02T333KP

LADDER RACK ASSY INSTALLATION PROCEDURE

Apply blue Loctite 242 or 243 wherever plus nut is used

Assemble the ladder rack sub-assembly (02T717) on the ground, then bring the complete assembly and mount it onto the pickup, aligning it with the mounting brackets using 5/16-18 Hardware's

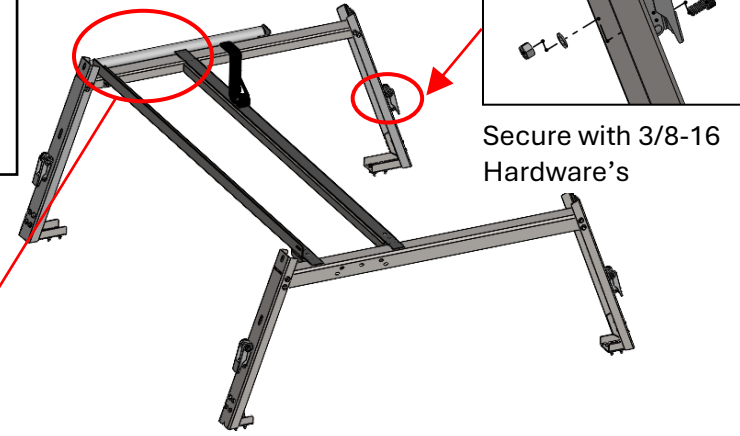
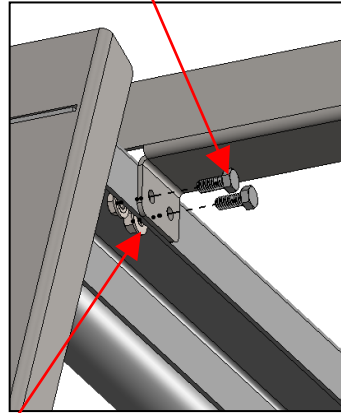


OPTION-1

5/16-18 NUT & WASHER

CAB & TAIL GATE SIDE

5/16-18 hardware's



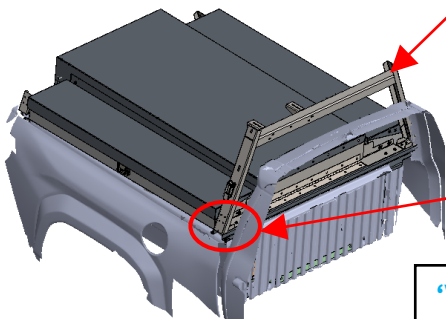
Secure with 3/8-16 Hardware's

Ladder rack sub Assy prepared on the ground

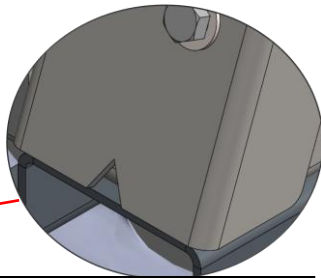
1. L/R Upright Assy (Tail gate & Cab side)
2. Horizontal cross bar LH & RH
3. Assemble the roller with LH & RH Brackets using Rivets at the RH & 5/16 Hardware's at LH
4. Assemble the ratchet straps all 4 uprights
5. Place the Rubber L angle 1/8X1.75 on the Horizontal cross bar
6. Assemble backstop on the Horizontal cross bar

OPTION-2

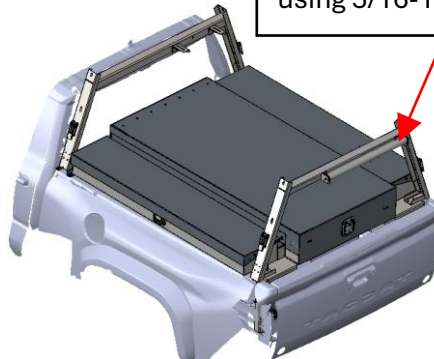
Install ladder rack sub Assy (02T716) on the cab side using 5/16-18 Hardware's



'V' Notch is identification for cab side mounting



Install ladder rack sub Assy (02T701) on the Tailgate side using 5/16-18 hardware's

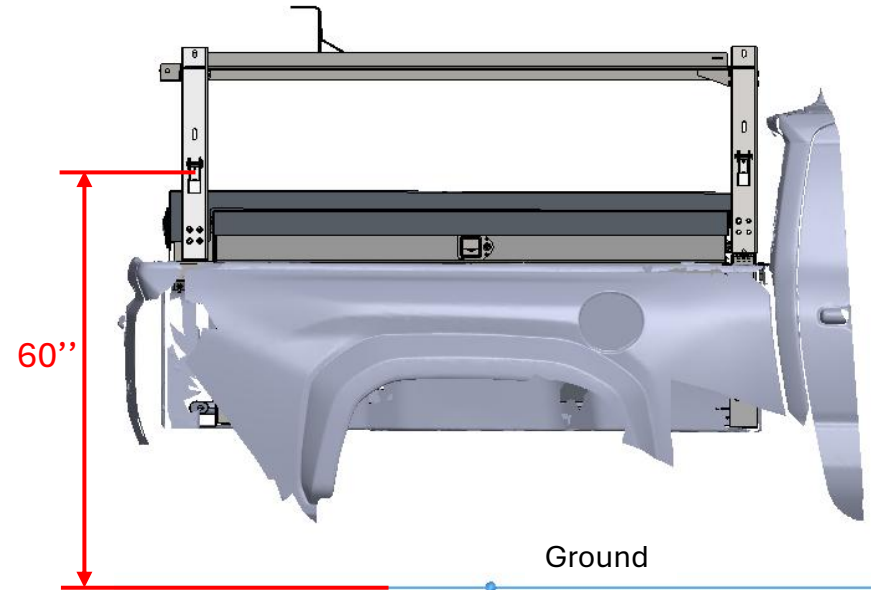
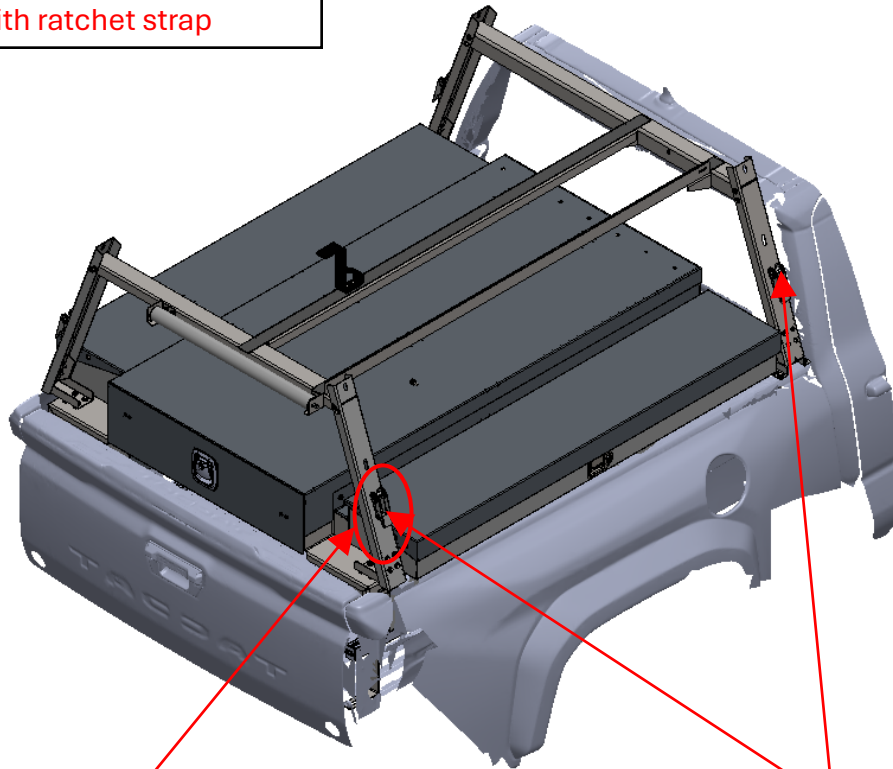


Install L/R horizontal Cross bars LH, RH Parts using 5/16X18 Hardware's Place the Rubber L angle 1/8X1.75 on the Horizontal cross bar & install back stop on the cross bars using 5/16-18 Hardware's

WI-02T333KP

RATCHET STRAP INSTALLATION PROCEDURE (OPTIONAL)

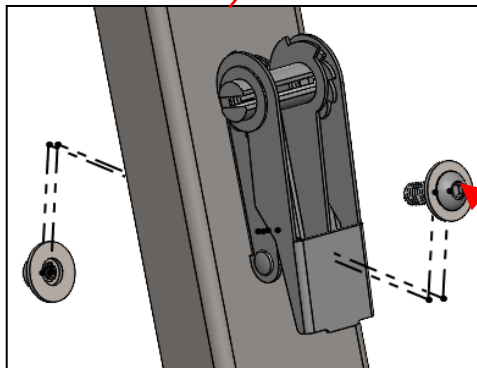
Hardware's will be provided along with ratchet strap



Step1. Cut the fixed/non-adjustable strap hook, then install it onto the ladder rack



Step2. Install Ratchet strap on all 4 vertical uprights of L/R as per location

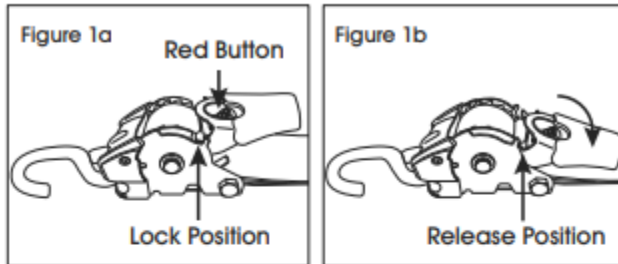


3/8-16 Button head cap screw

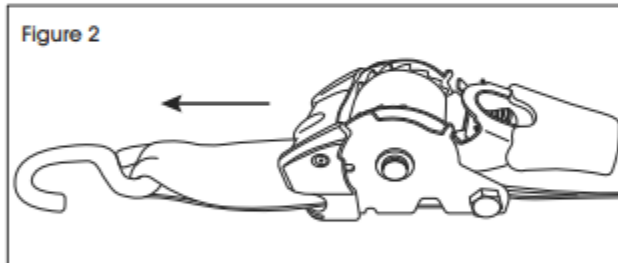
Secure with 3/8-16 Hardware's

RATCHET STRAP OPERATING PROCEDURE

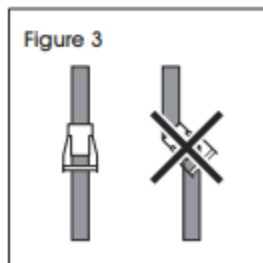
1. Press red button and move handle downwards into release position. (See Figures 1a-1b)



2. Pull strap to desired length and hook to anchor points. (See Figure 2)

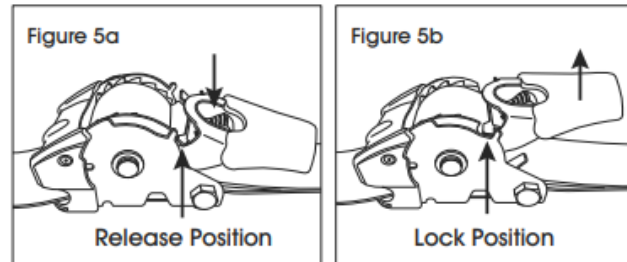


NOTE: Handle must be in line with direction of pull to achieve working load limit. (See Figure 3)

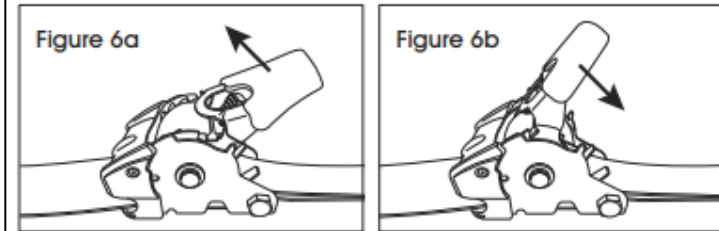


3. Wrap the strap around the ladder, insert hook into the hole, then press red button to tension the strap

4. Press red button and move handle upward into lock position. (See Figures 5a-5b)



5. Once in lock position, move handle up and down to tighten tie-down. When tight, return to lock position.



6. To Release tie-down, press red button and move handle downward into release position. It's recommended to keep tie-down hooked during this step

7. When in release position, unhook the tie down from anchor points and press red button to retract

WI-02T333KP

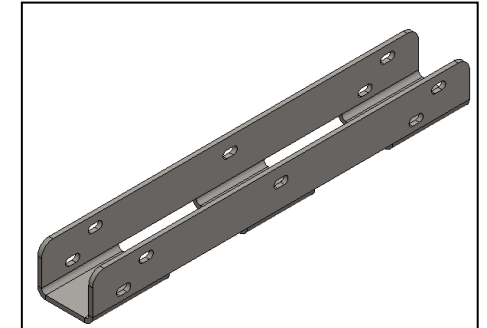
EXTENSION L/R (02T951KP) INSTALLATION PROCEDURE

Use 5/16 washer Wherever elongated hole is there

STEP-1: Mount the reinforcement channel (02T715) and tighten it to the cab side of the main ladder rack hardware 5/16-18

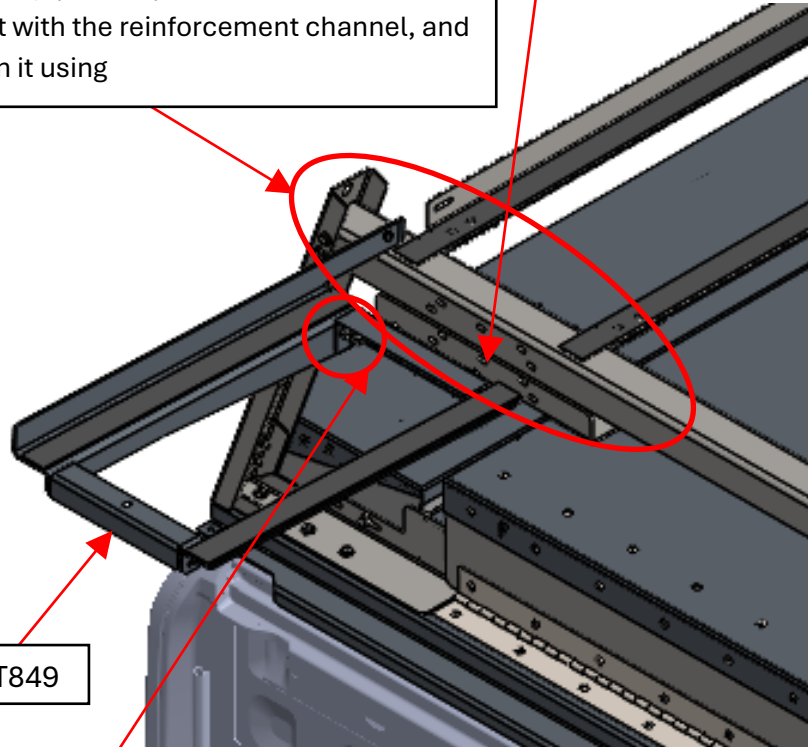


02T849-EXTENSION L/R SUB-ASSY

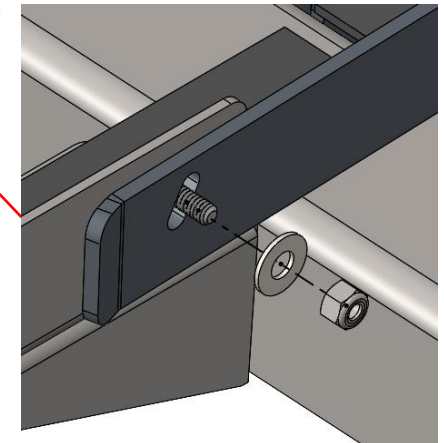
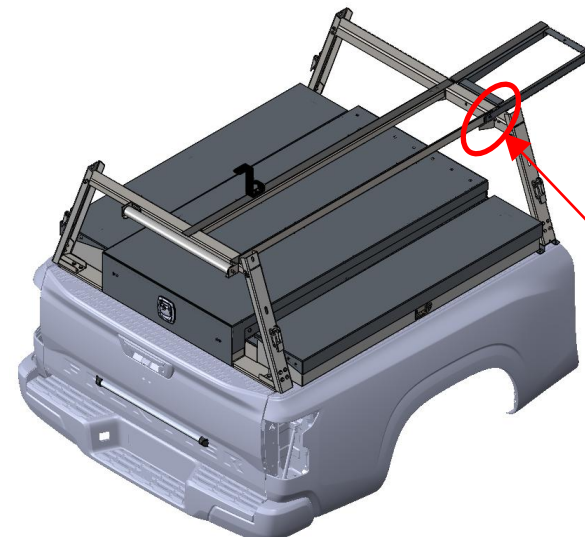


02T715-REINFORCEMENT CHANNEL

STEP-2: Attach the Extension L/R Sub-Assembly (02T849) to the main ladder rack, align it with the reinforcement channel, and tighten it using



02T849



STEP-3: Align the extension ladder rack to the main ladder rack, then tighten it using 1/4-20 round head bolts, washers, and nuts. *

* Once the extension L/R are aligned with the main ladder rack, ensure all hardware's is securely tightened.

Hardware's will be provided along with Extension L/R

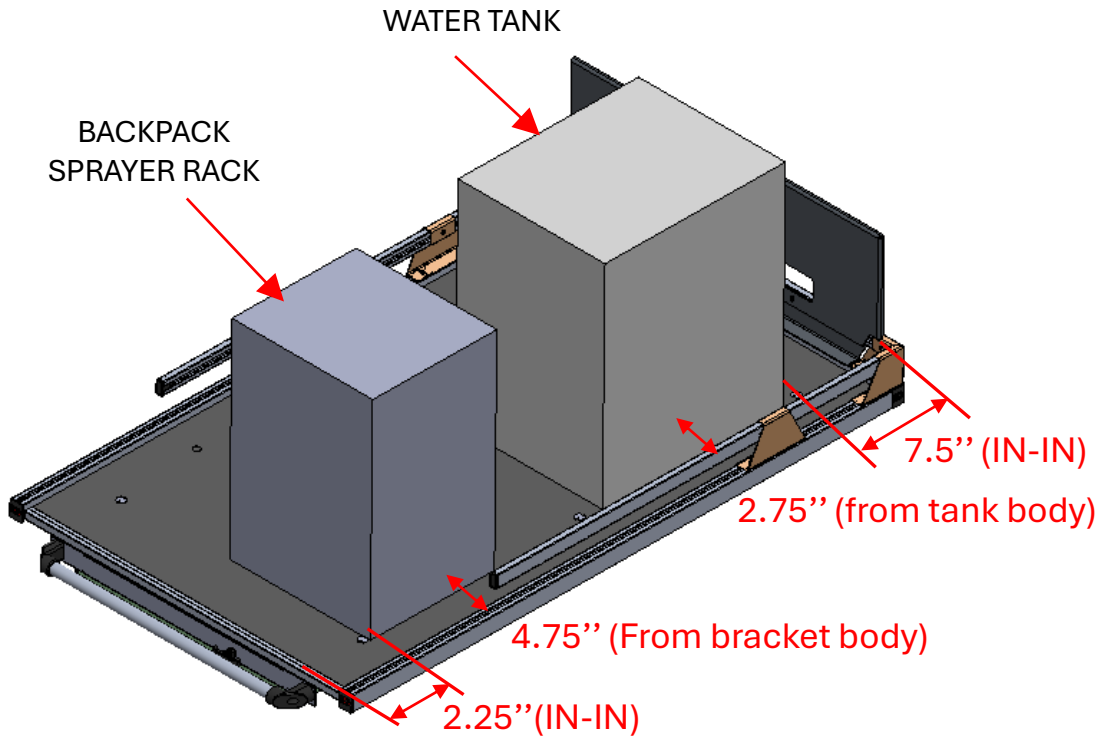
STEP-4: Once align to the main ladder rack, then tighten the hardware's *

WI-02T333KP

Revision table		
Rev	Description	Date
1	Initial Release	05/09/25
2	Revised page-7 ,9 & added page-10 as per customer feedback	05/30/25
3	Added bolt tightened notes in page-4 ,5, 6 & Removed sealing rubber	06/03/25
4	Note has been added for the removal of the fixed strap hook	06/16/25
5	Assembly sequence changed	08/07/25
6	Water tank, backpack spray Location updated & L/R Images updated	11/13/25
7	Blue Loctite notes are added in sheets 2, 6, 7, 9 & 10. Guide Block installation image included in sheet 7. Tightening of bolt notes updated in sheets 6 & 7.	12/19/25
8	Removed preliminary watermark on all the sheets	12/31/25
9	Removed sprayer rack and water tank from page-4, added extension L/R installation procedure and added addendum sheet for water tank, sprayer rack installation instructions in page-15	03/06/26

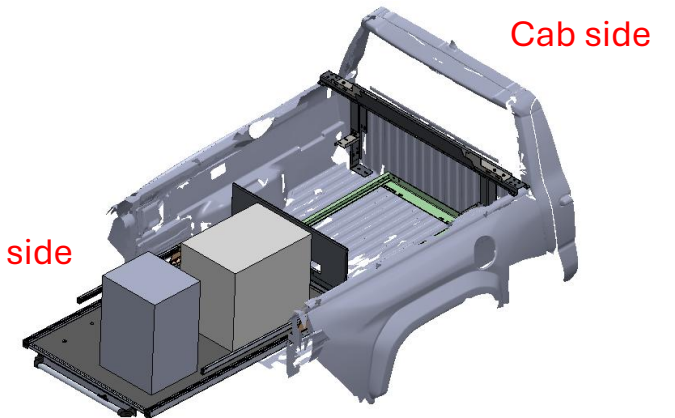
TYPICAL WATER TANK AND BACKPACK SPRAYER INSTALLATION

Use washer Wherever elongated hole is there



Install the water tank, backpack sprayer rack, on to the bed slide

BED SLIDE SUB ASSY



Install the bed slide **sub-assembly** into frame in the pickup